

CURSOS Y SEMINARIOS DE FORMACIÓN EN SEGUROS AGRARIOS 2023

SEMINARIO DE FRUTALES

Webinar - Actualidad de la fruticultura en las principales zonas productoras


Sesión 2: Polinización. Condiciones climáticas y características de los frutales. Adaptaciones varietales.

8 de marzo, 11:00h

Javier Rodrigo
Investigador del CITA

Engracia Guerra
Investigadora del CICYTEX

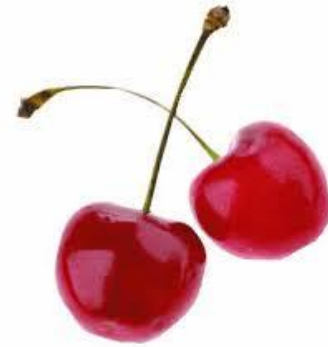
Patrocina:

agroseguro


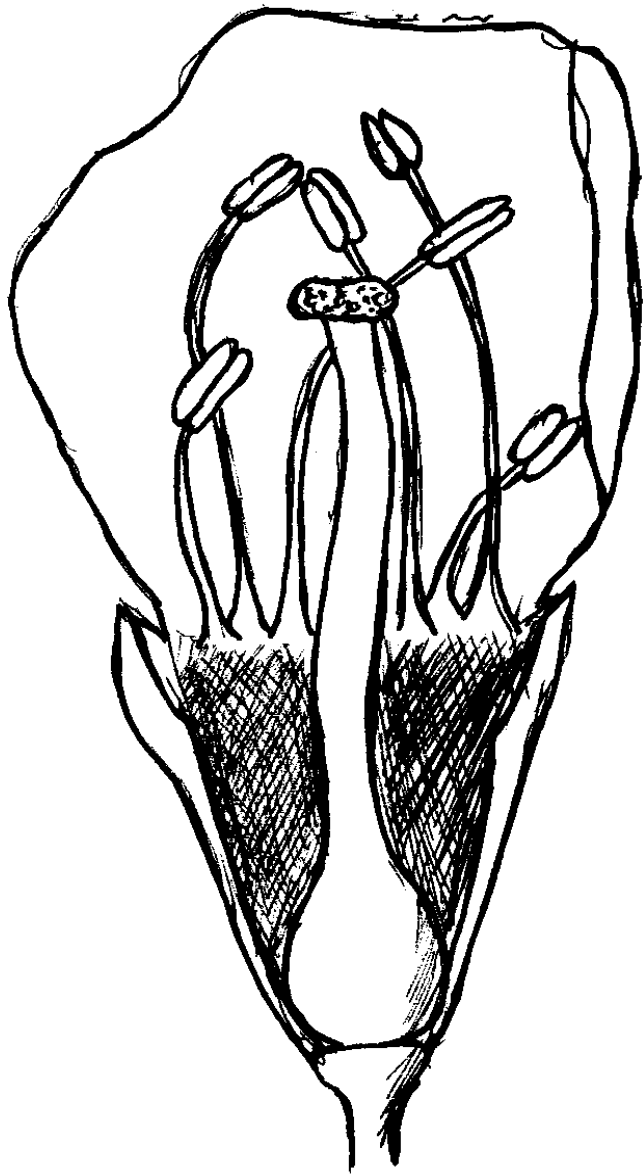


POLINIZACIÓN EN FRUTALES

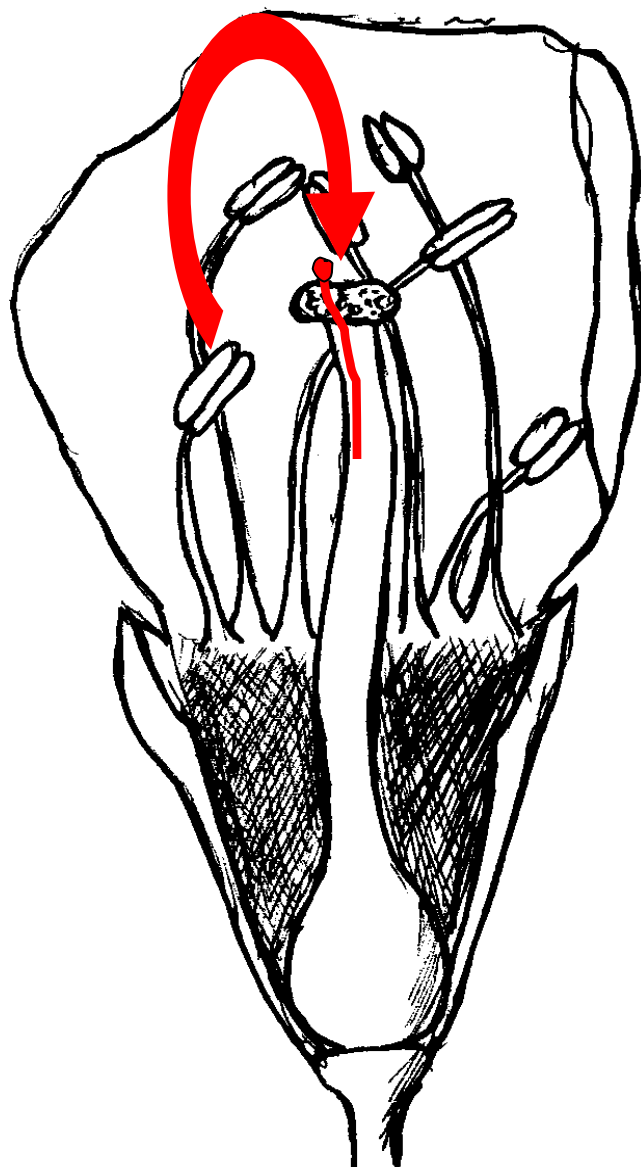
GÉNERO PRUNUS

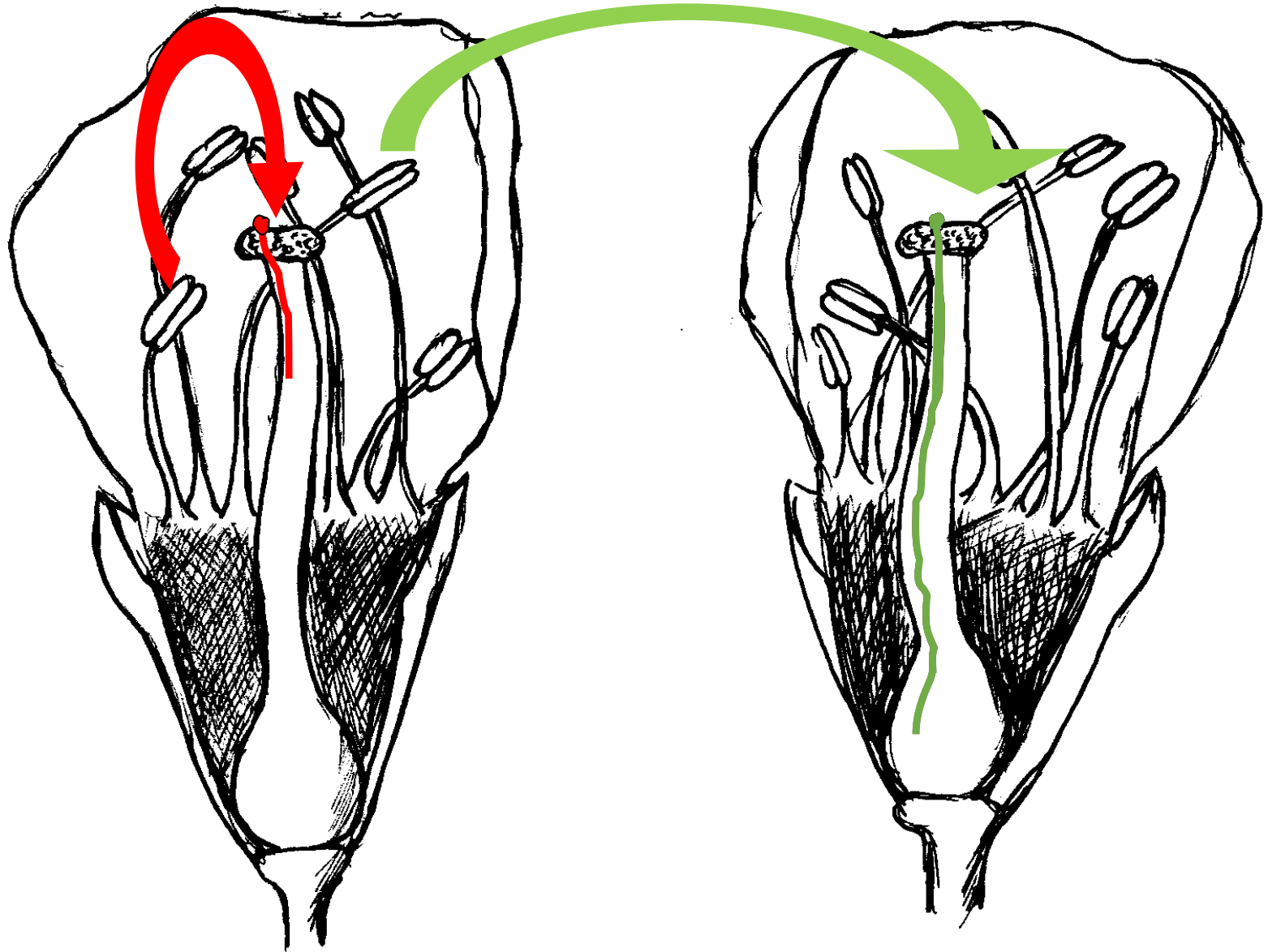


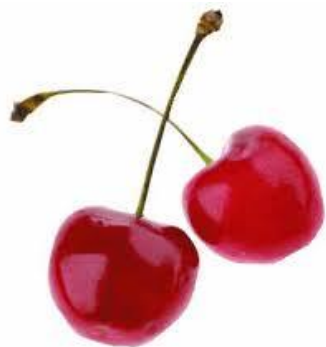




SISTEMA DE
INCOMPATIBILIDAD
GAMETOFÍTICA







Prunus avium



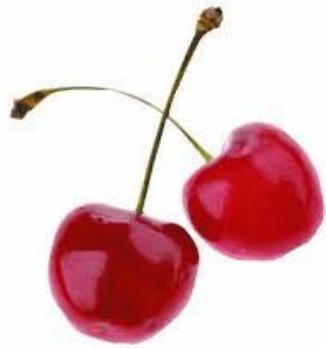
Prunus armeniaca



Prunus salicina



Prunus persica



Prunus avium



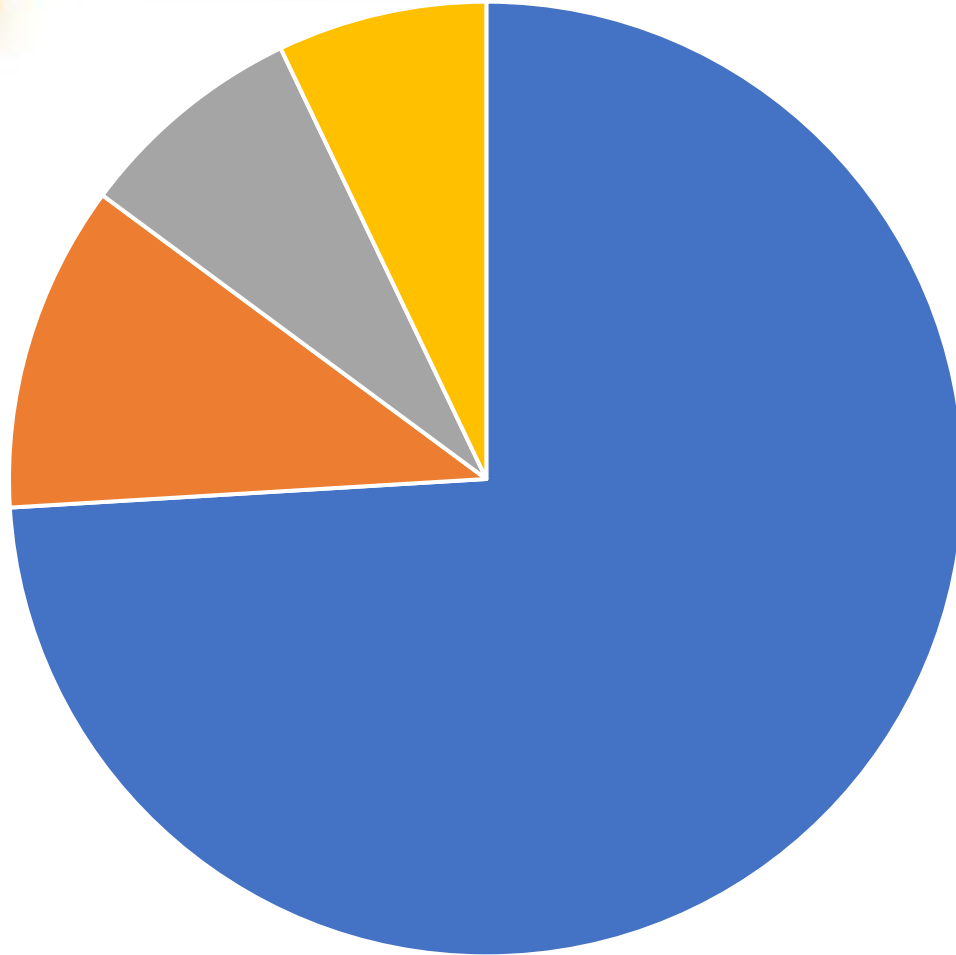
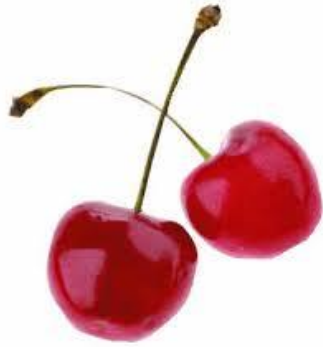
Prunus armeniaca



Prunus persica



Prunus salicina



14000000

12000000

10000000

8000000

6000000

4000000

2000000

0

2000 2001 2002 2003 2004 2005 2006 2007 2008 2009 2010 2011 2012 2013 2014 2015 2016 2017 2018 2019 2020

— ha — tonnes



2007



2007


agroseguro



2007

agroseguro



A close-up photograph of several white cherry blossoms in full bloom. The flowers have five petals and numerous yellow stamens. The background is a clear, bright blue sky, with other blossoms visible but out of focus. The text "Problemas externos" is overlaid on the right side of the image in a white, serif font.

Problemas externos




**METEOROLOGÍA ADVERSA
DURANTE LA FASE DE
FLORACIÓN**



**INSECTOS
POLINIZADORES
SUFICIENTES**

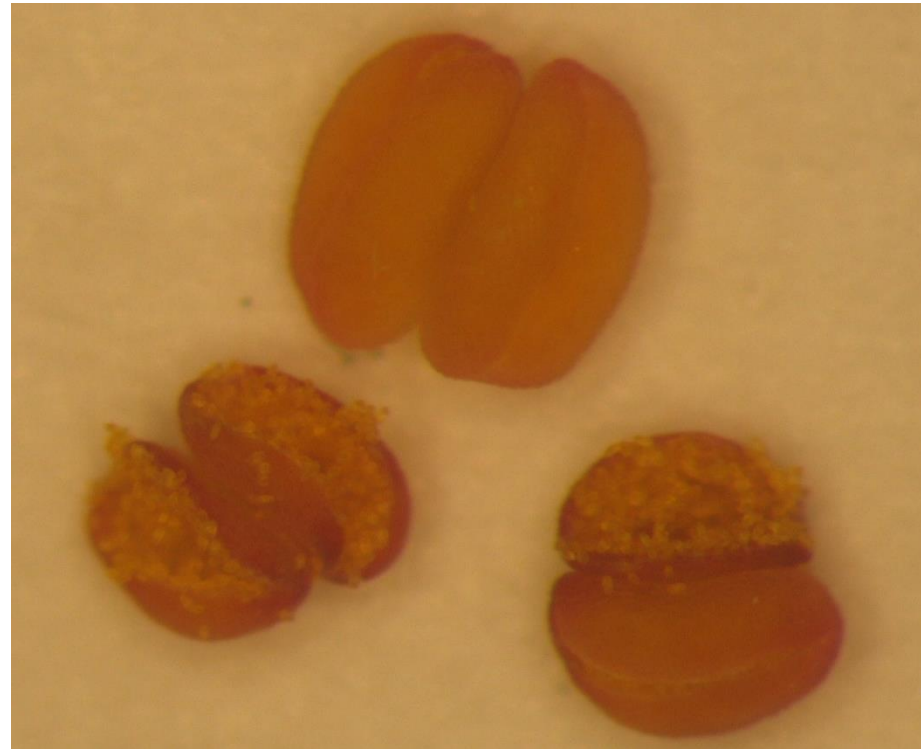
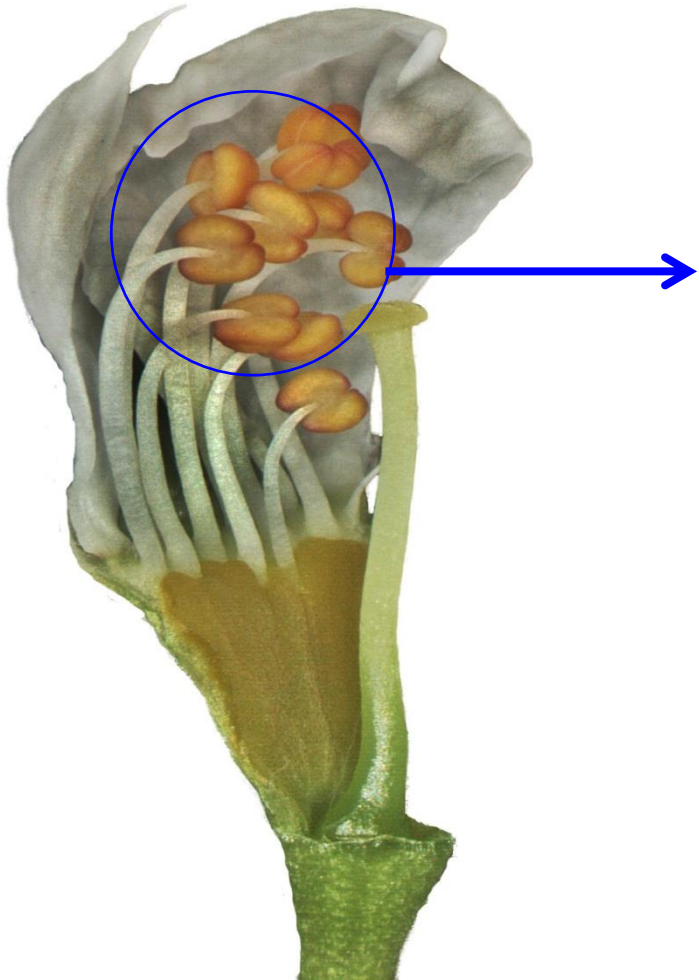


**COINCIDENCIA EN LAS ÉPOCA
DE FLORACIÓN DE LAS
VARIEDADES**

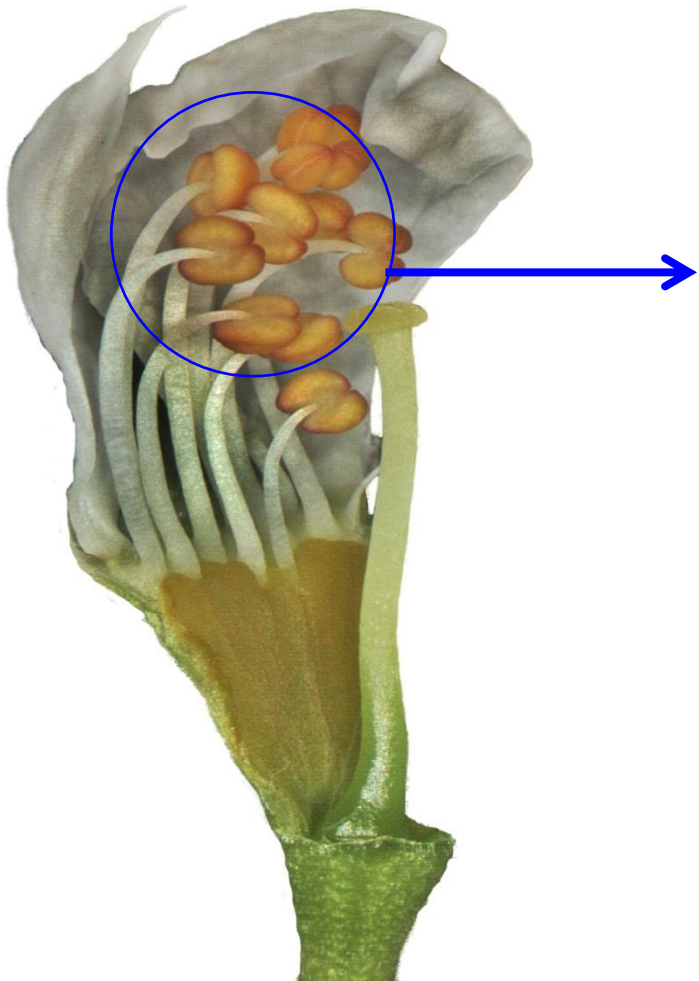


Problemas
propios de la
especie

Presencia y viabilidad del polen



Variedades sin polen (androestériles)



Variedades androestériles
606
Red Beaut
Black Jewell
Sybarite
First Beaut

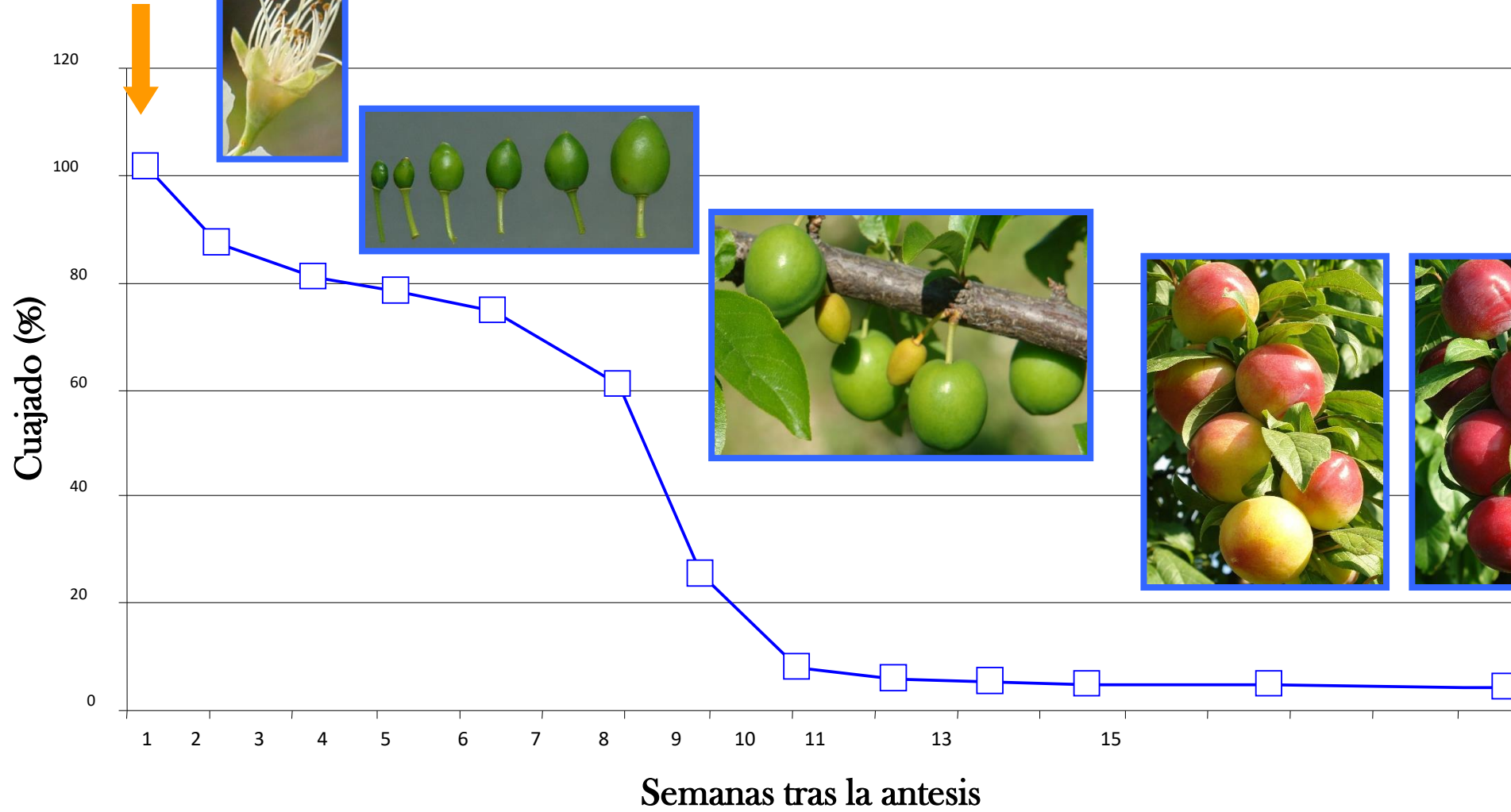
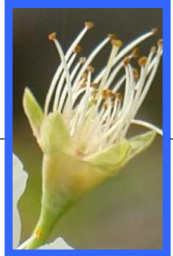
COMPATIBILIDAD ENTRE VARIEDADES

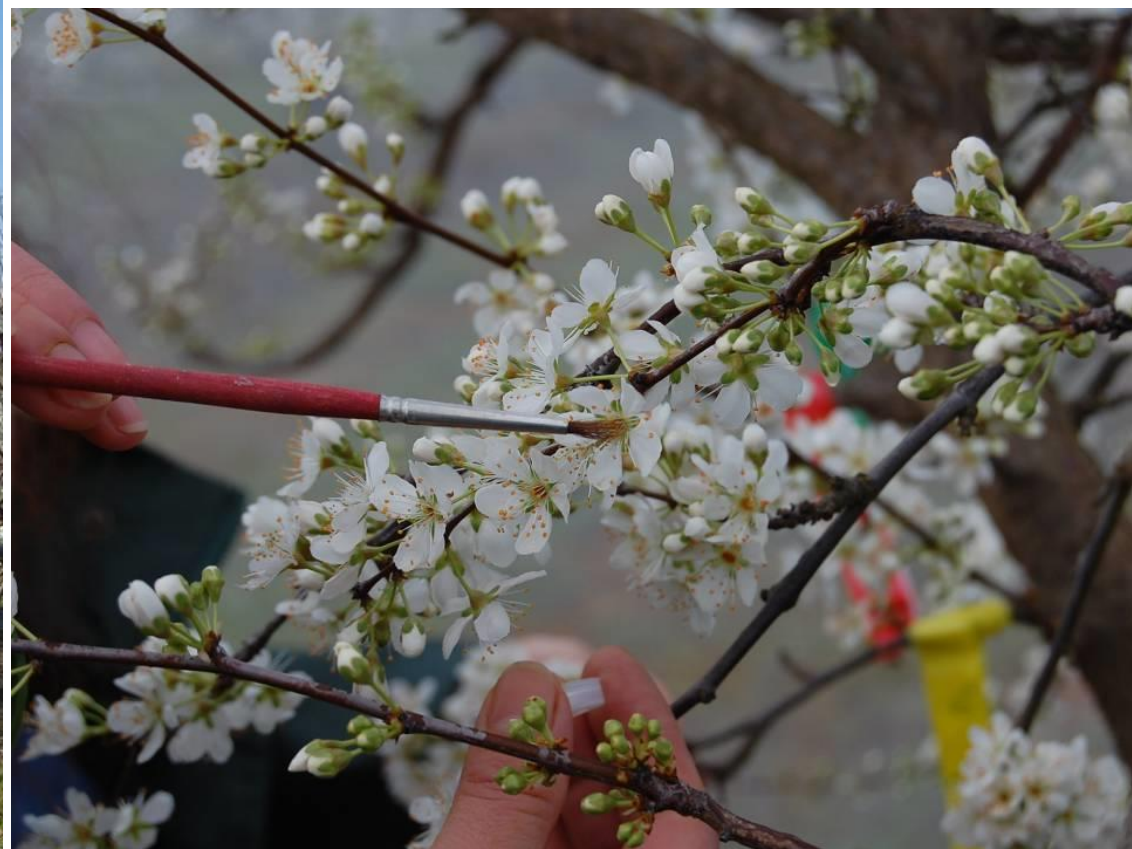


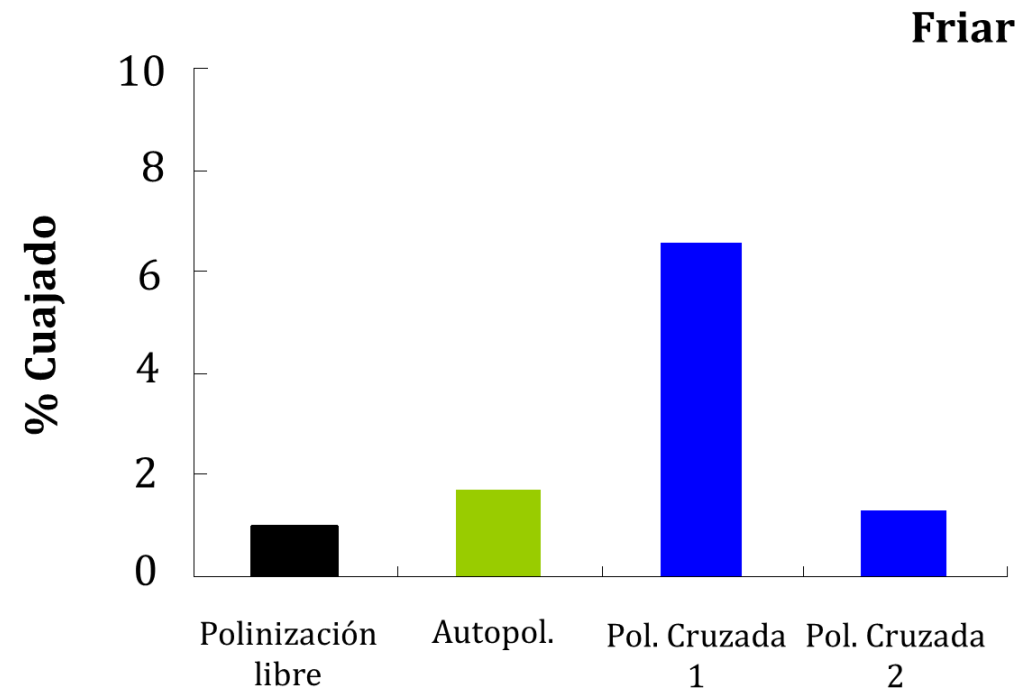
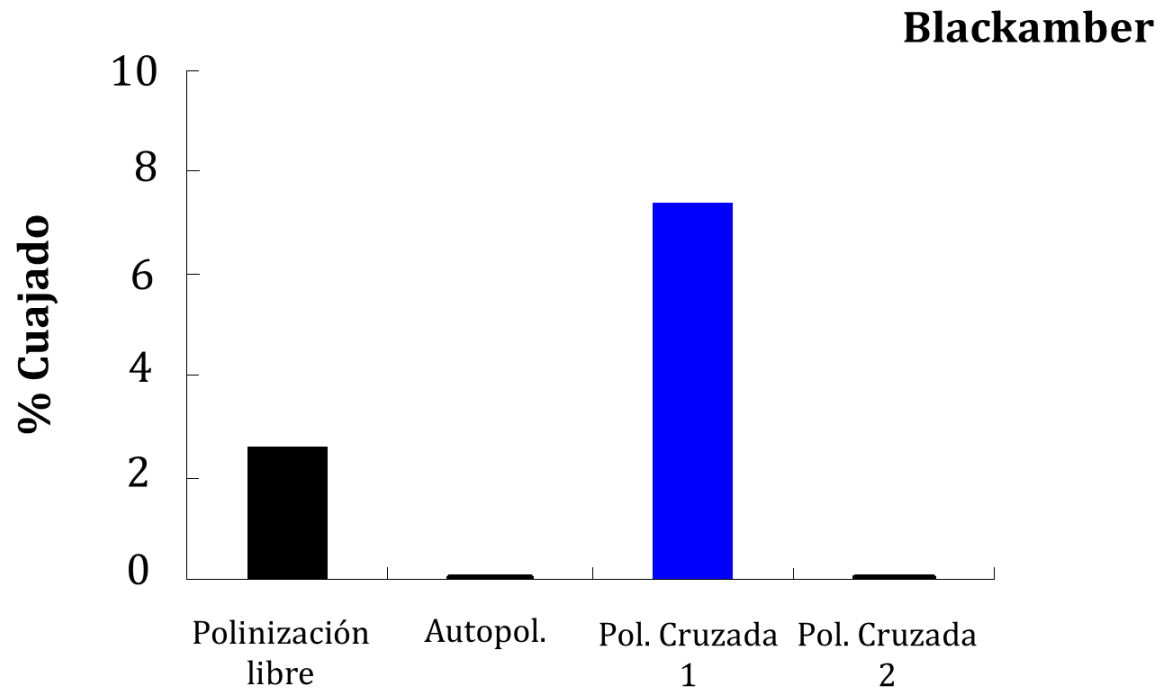


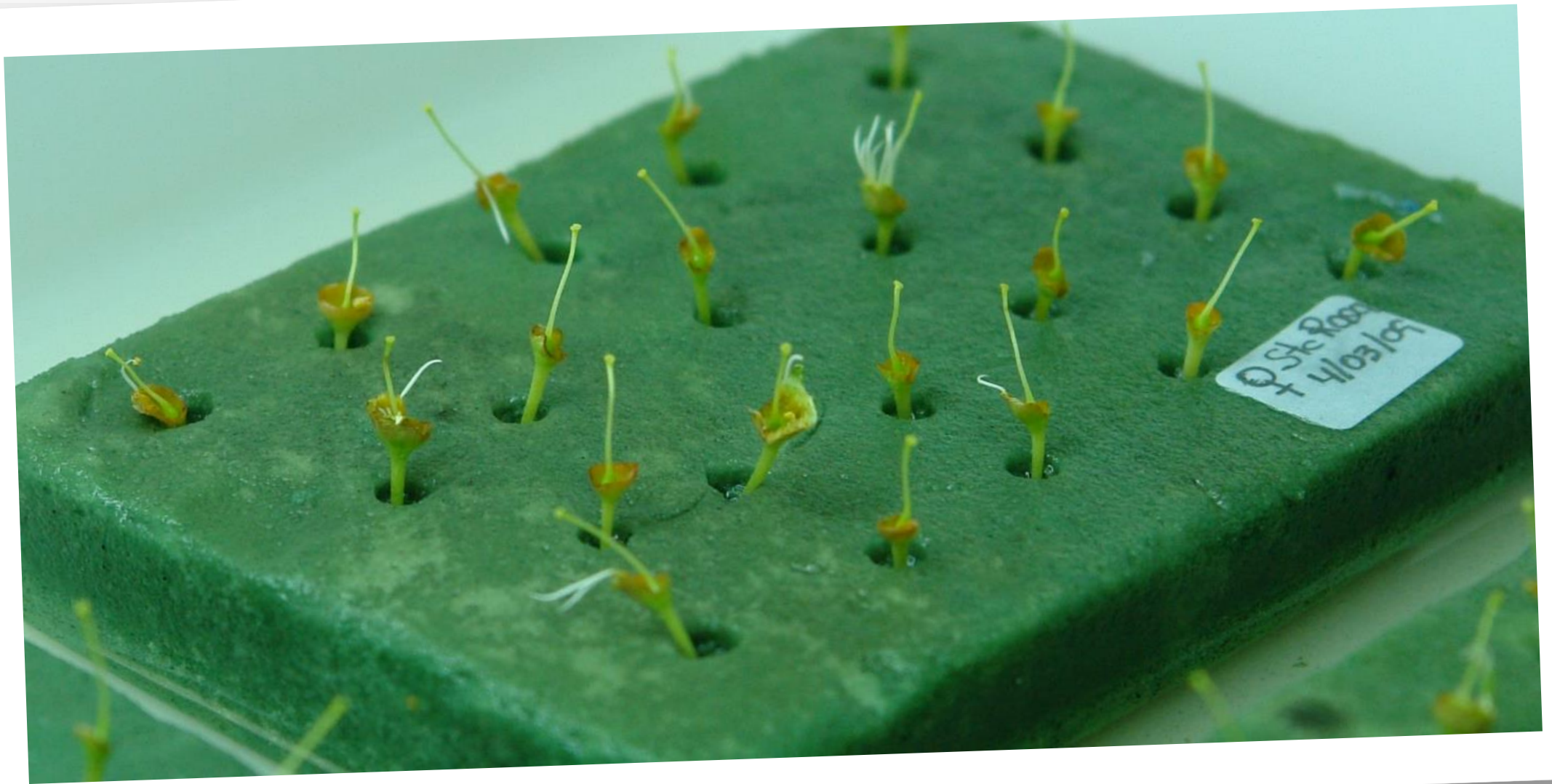


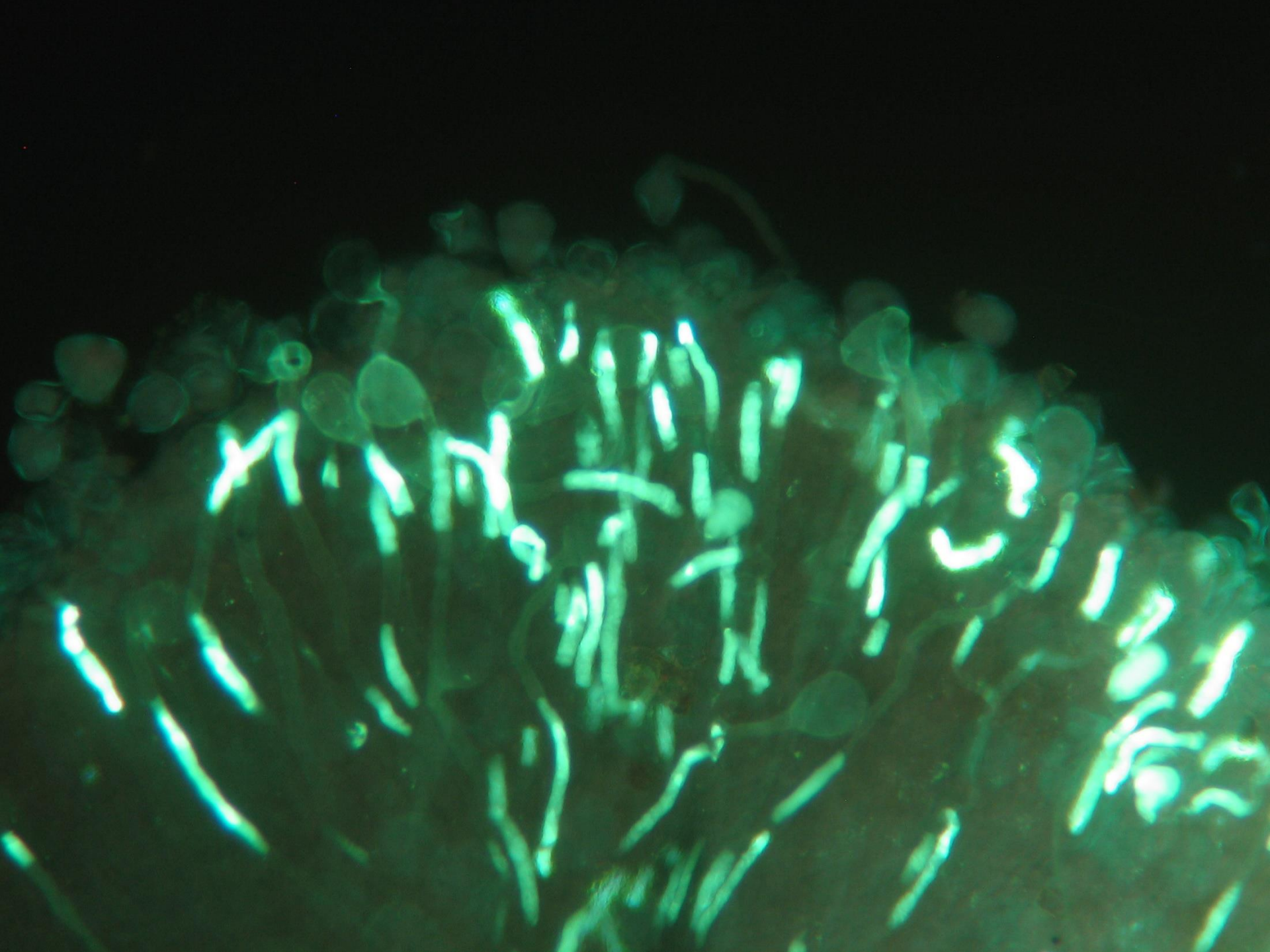
Antesis

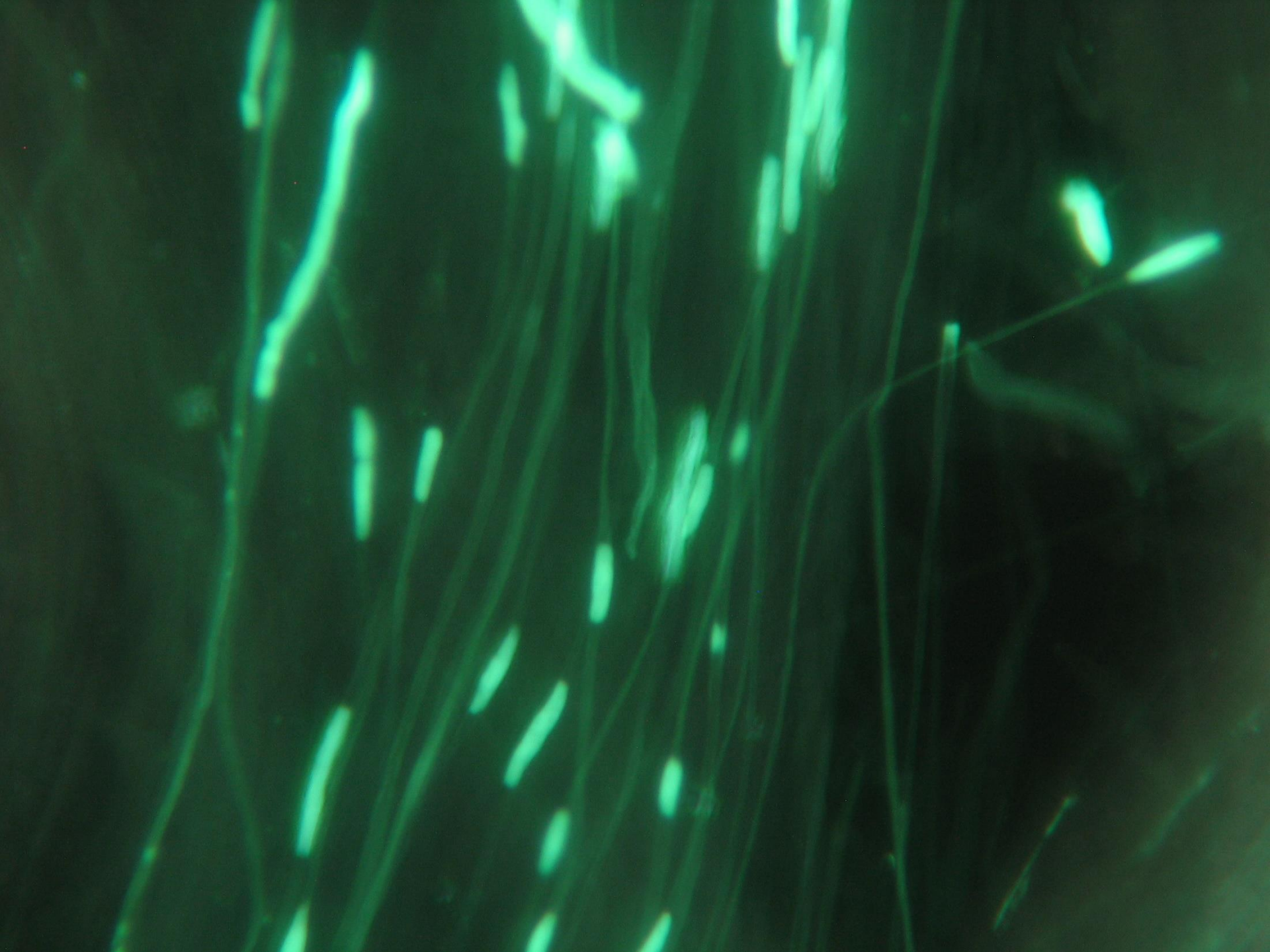


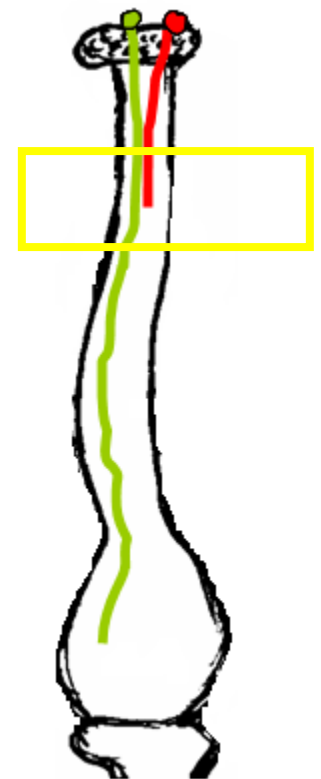
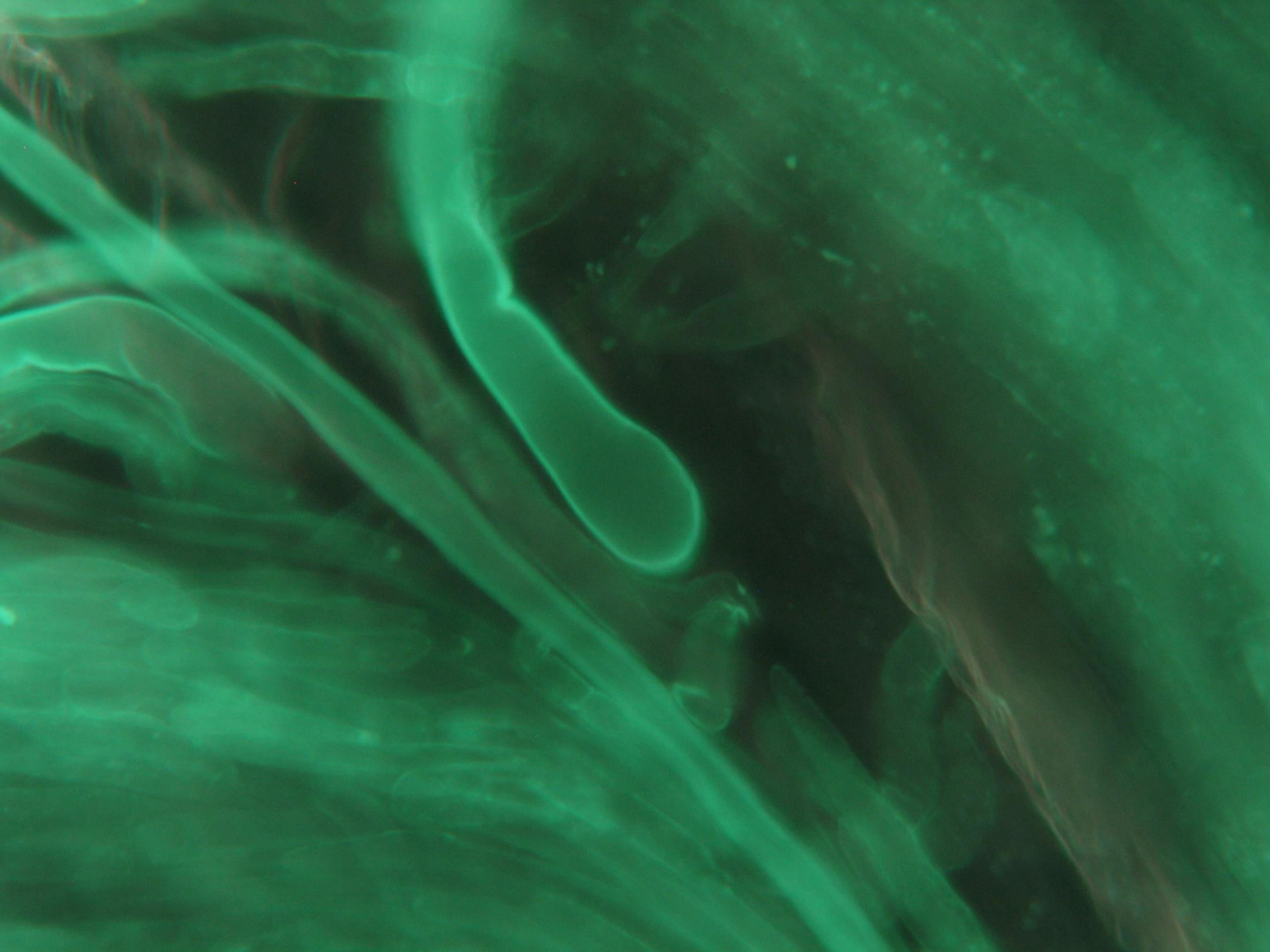


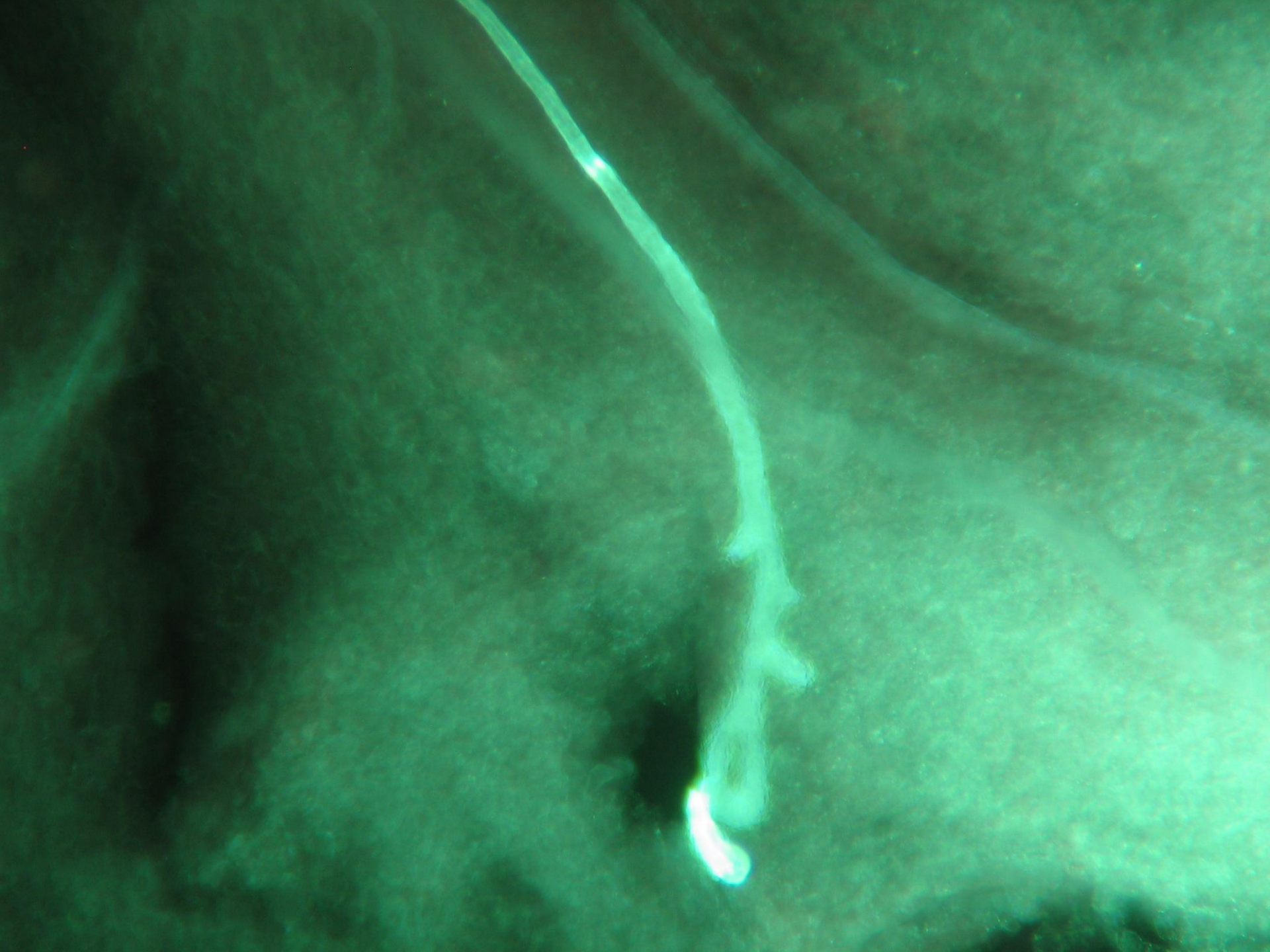














SISTEMA DE INCOMPATIBILIDAD GAMETOFÍTICA



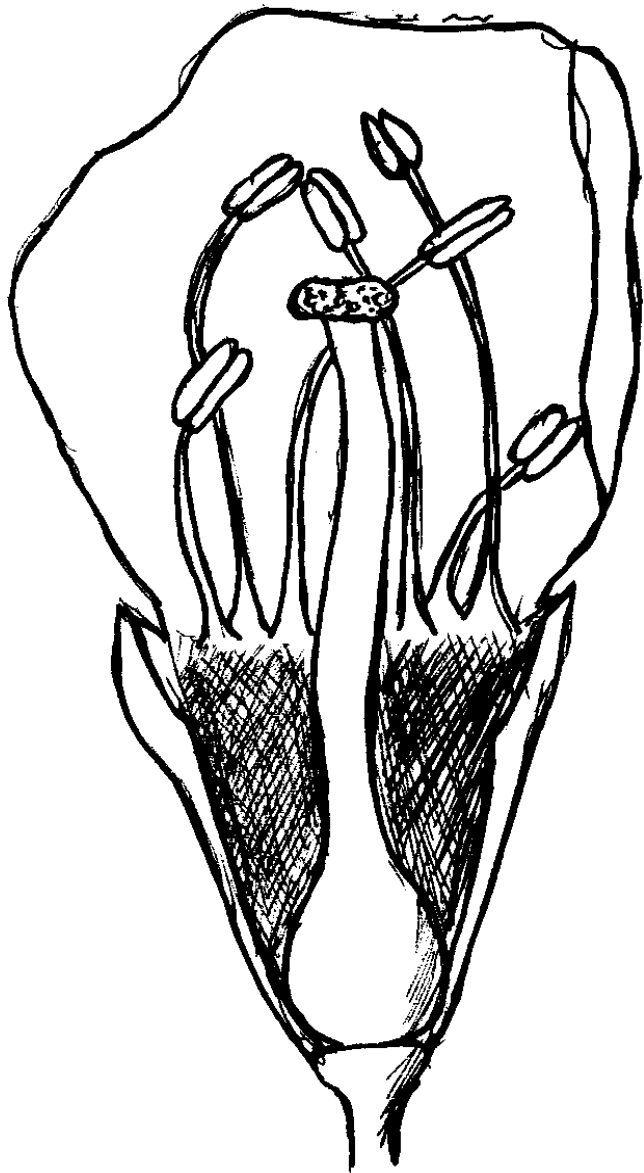
LOCUS S

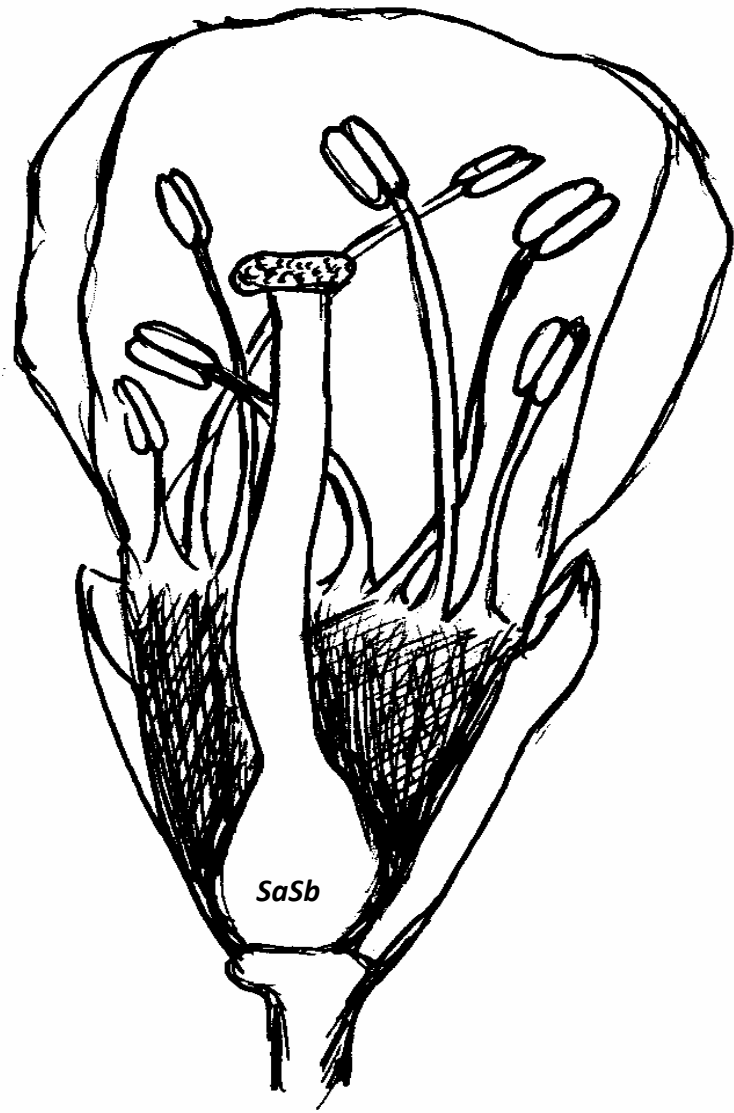


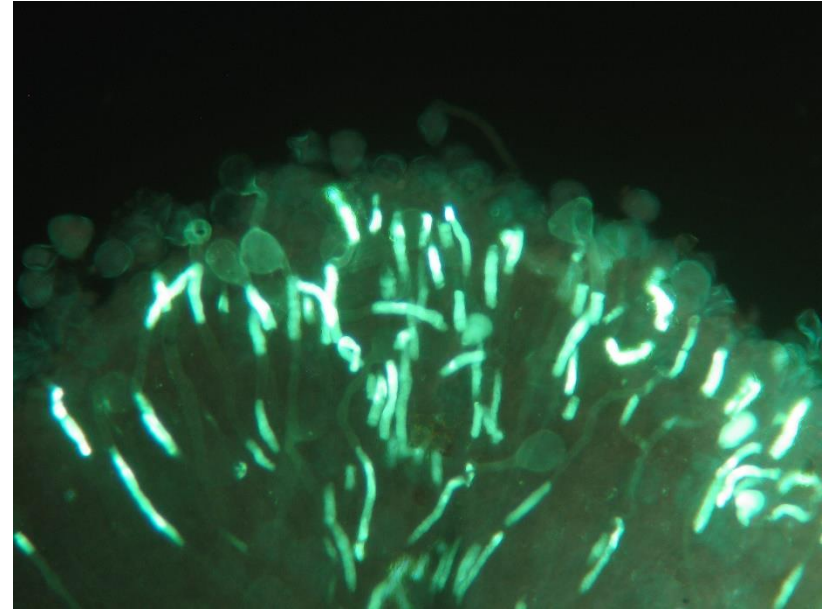
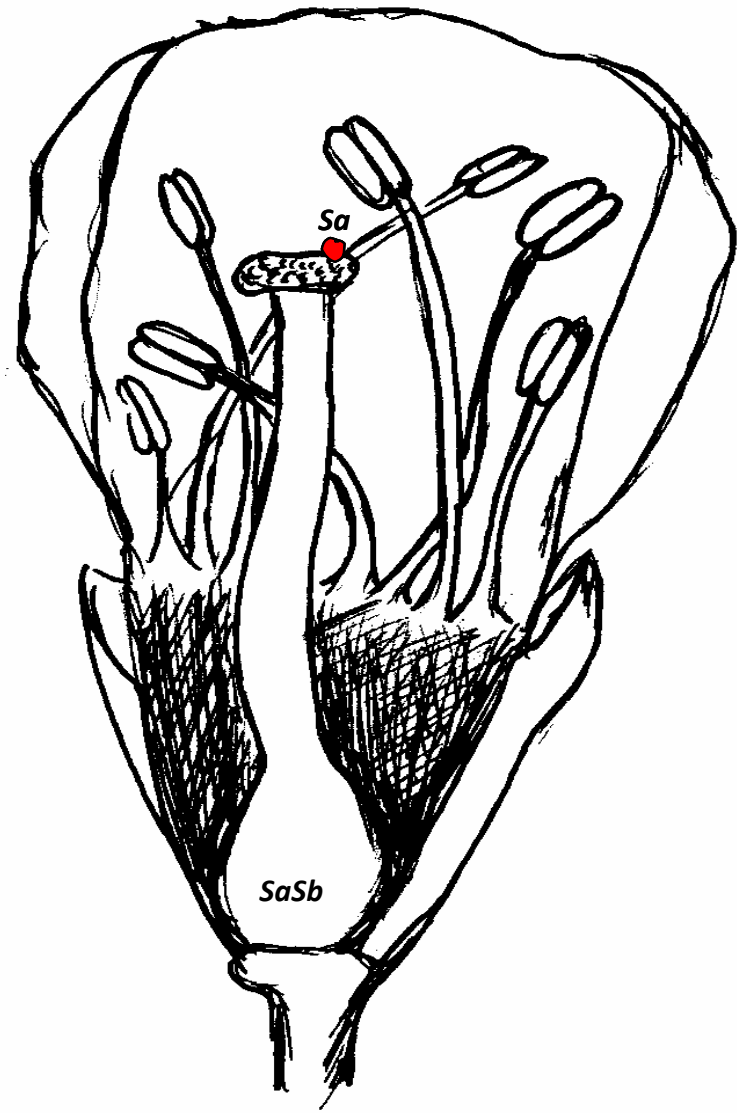
SRNasa
(2n)

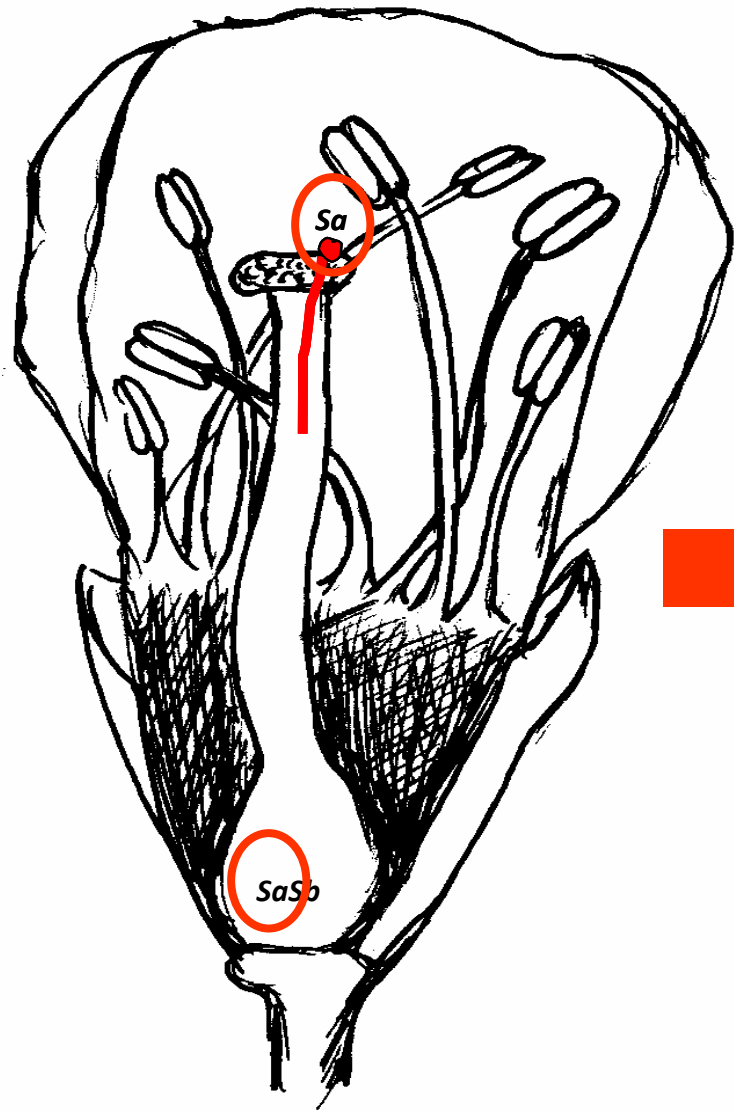


SFB (n)

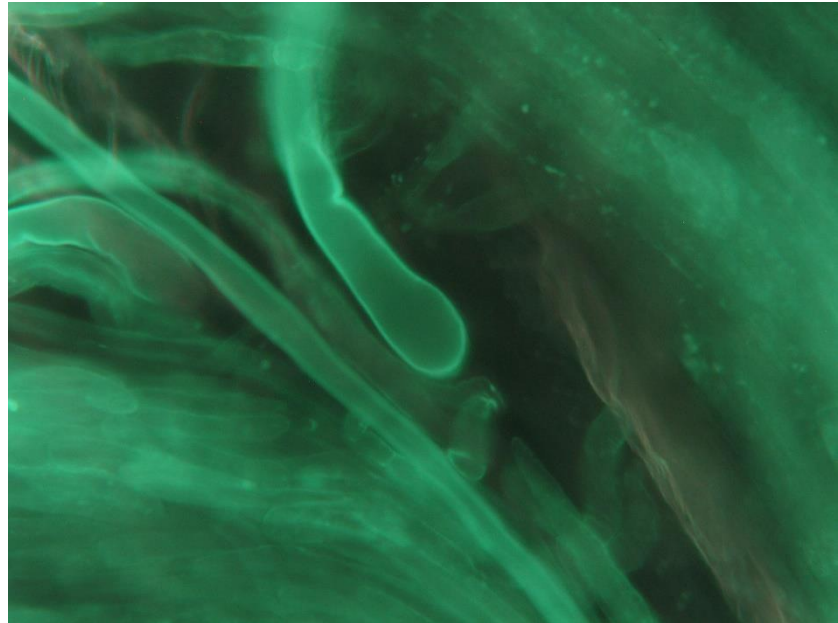




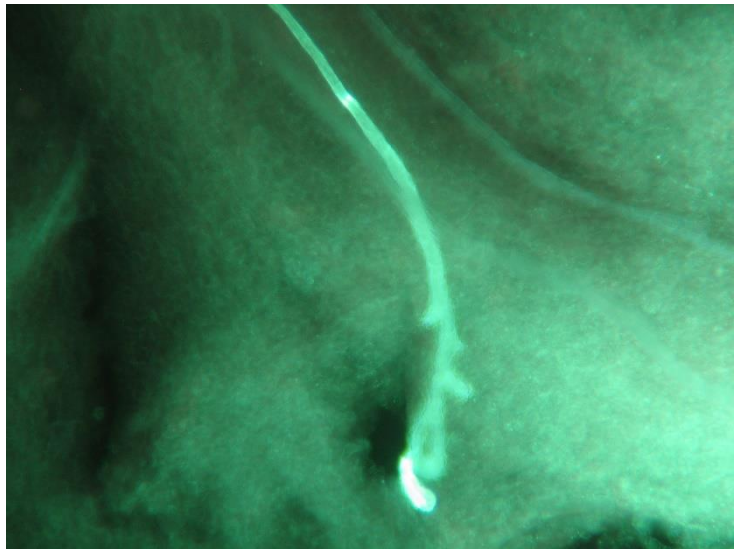
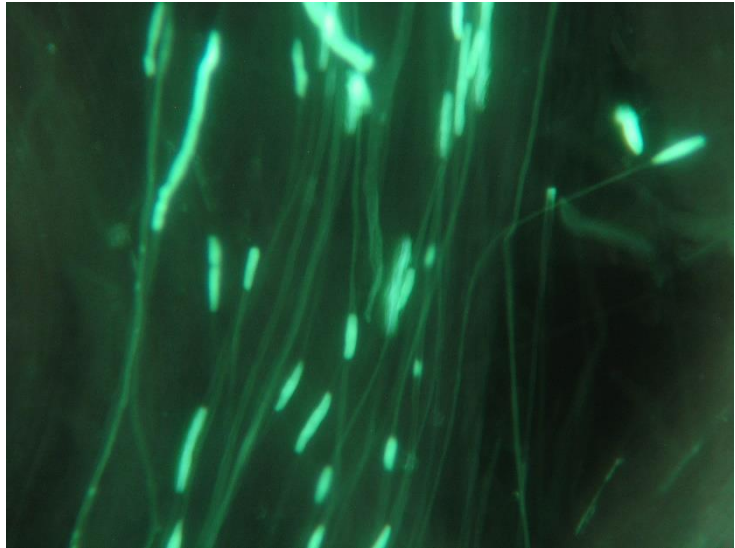
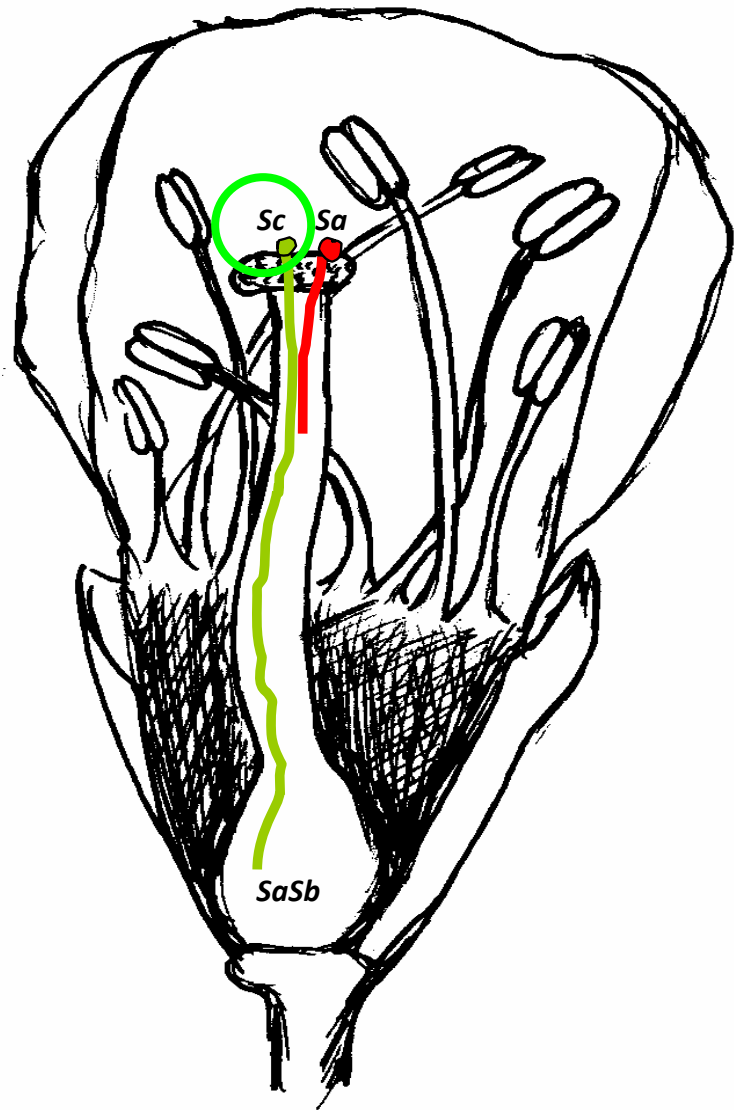




INCOMPATIBLE



COMPATIBLE

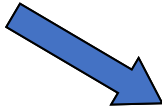




Locus S

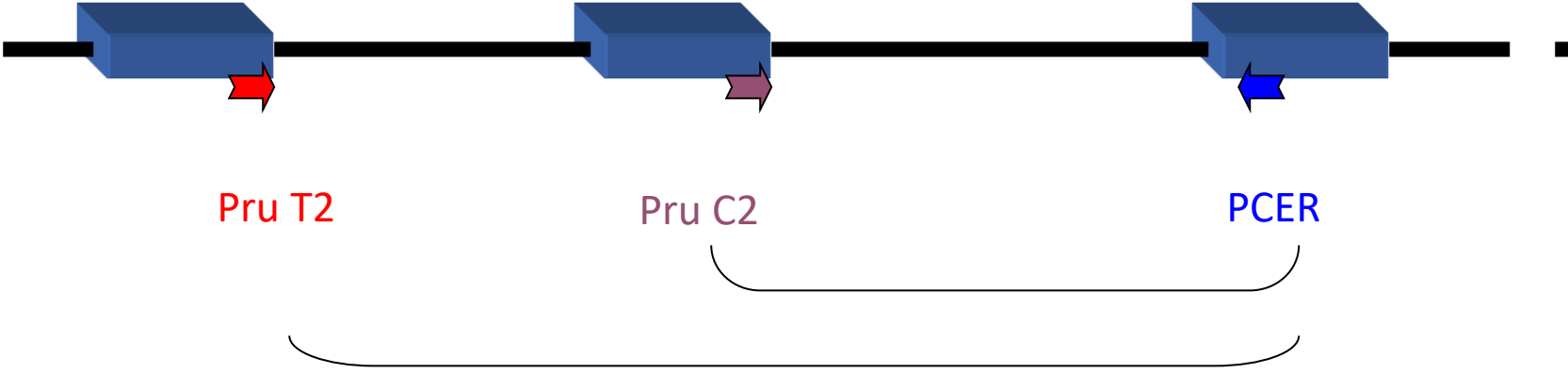
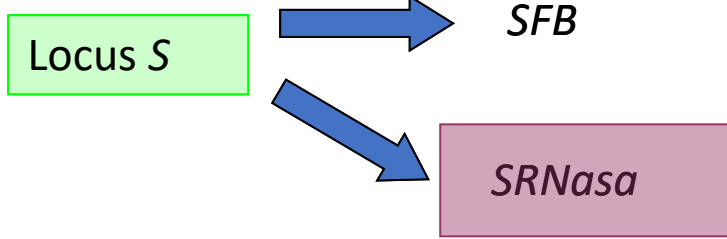


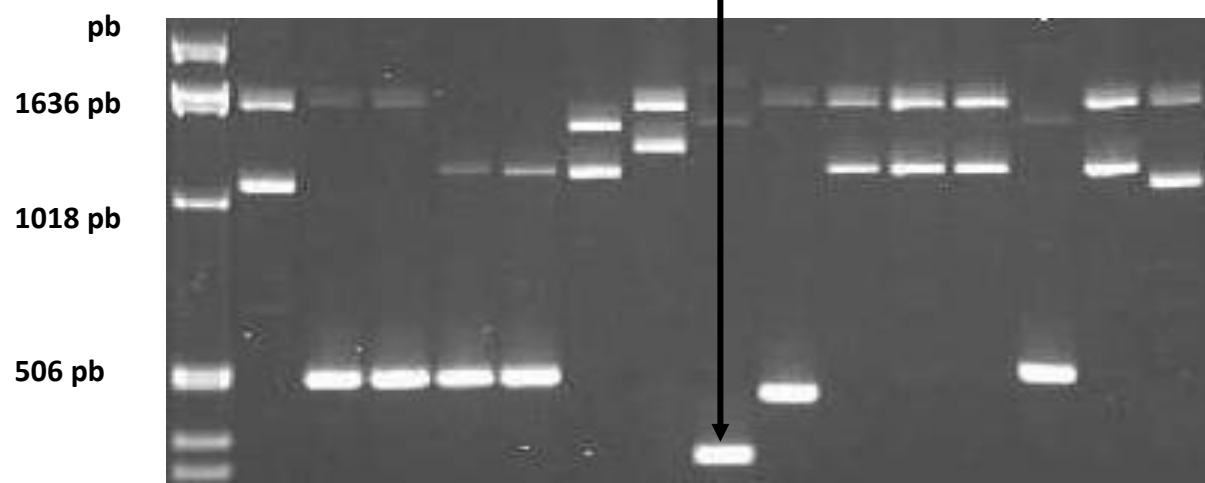
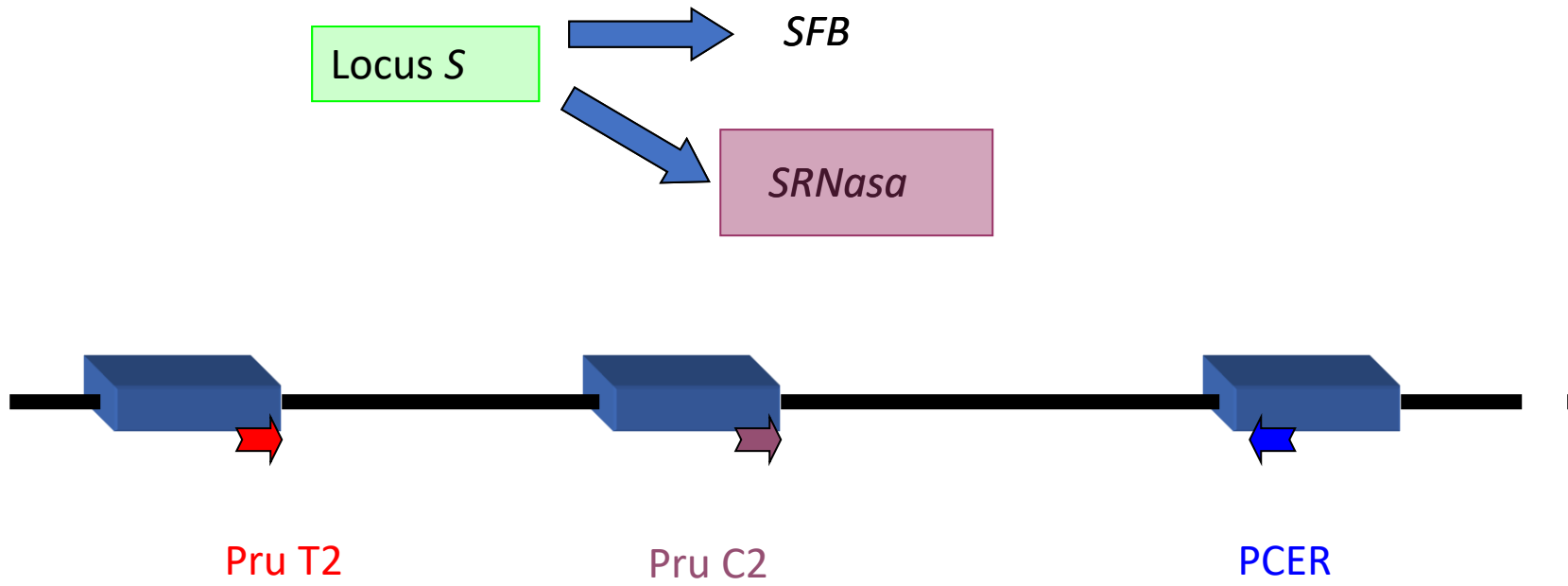
SFB

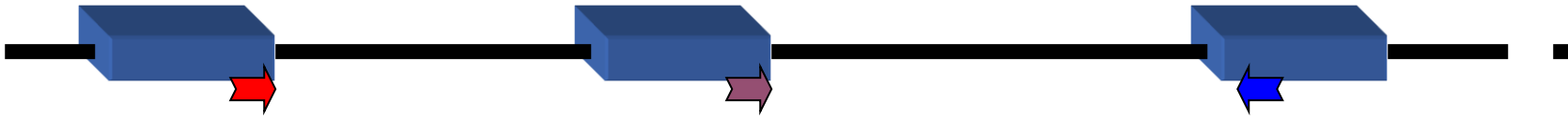
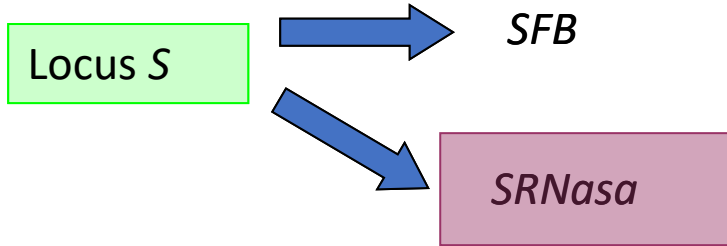


SRNasa





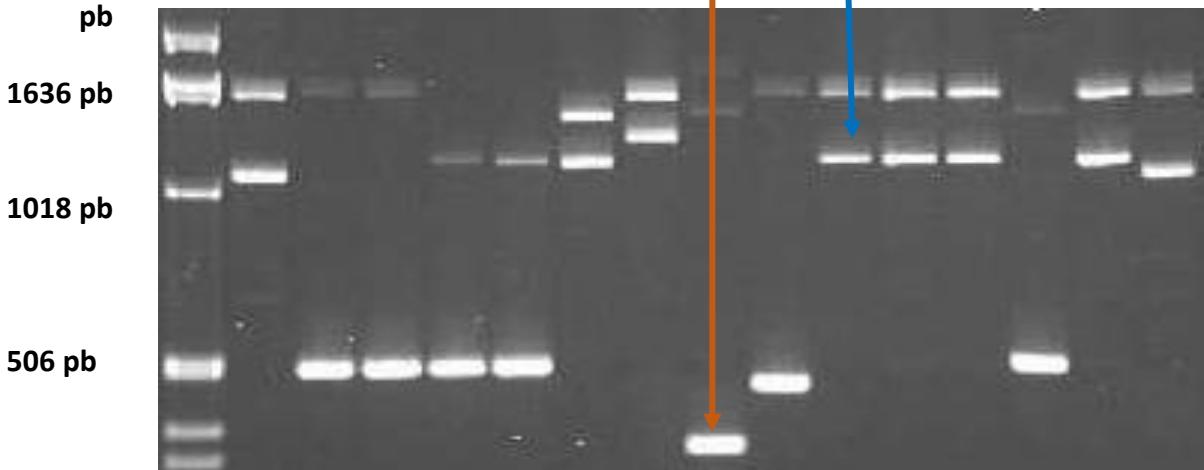


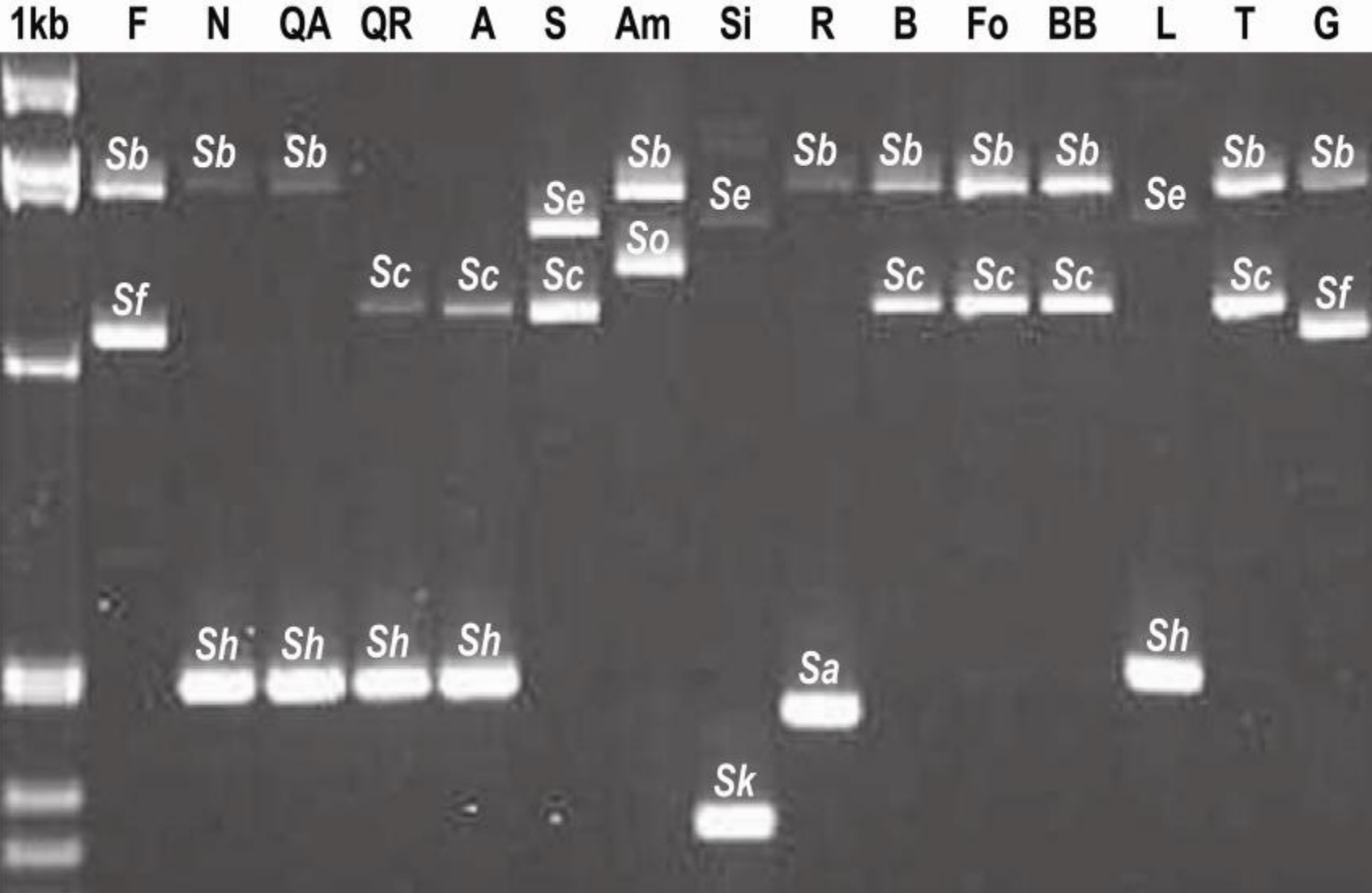


Pru T2

Pru C2

PCER





G.I.	Genotipo S	Variedades analizados
I	<i>SaSb</i>	606, Red Beaut, Sordum, Burmosa
II	<i>SbSc</i>	Blackamber, Black Beaut, Delbartazur, Fortune, Golden Plumza, Green Sun*, Laroda, October Sun, TC Sun, Zanzi Sun, Golden Globe, Golden Plum, Early Sun, SPR3318, SGPR3726, 3556, 3726
III	<i>SbSf</i>	Frontier, Golden Globe*, AU Amber, AU Road Side
IV	<i>SbSh</i>	Eldorado, Freedom, Friar*, Hiromi Red, Larry Ann, Nubiana, Owen T, Queen Ann, Songria 10, E137, E316, PR34
VII	<i>ScSh</i>	Angelenex, Angeleno, Queen Rosa, Ruby Crunch, Gaia, Sweet August, 30-an-7, Royal Diamond, Ruby Queen, 3485
VIII	<i>SeSh</i>	Black Diamond, Black Gold, Black Late, Diamex, Earliqueen, Extremagold, John W., Laetitia, Showtime, Souvenir, 26-bd-10, PR9, 3571, 3530, 3575
IX	<i>SfSg</i>	Golden Japan
X	<i>ShSk</i>	31-SG-6, Golden Plum, Howard Sun, Songgold, 3611, 3989
XI	<i>ScSe</i>	Autum Giant, Black Splendor, Casselman, Royal Zee, Royal Garner, Santa Rosa, Champion, Rubirosa, Sybarite, AU Rosa, E326, 3527
XII	<i>SbSe</i>	Pioneer, Sapphire, Black Jewell, Freya, SGPR551, Sparkly
XIII	<i>SeSf</i>	Black Star, Primetime, Morris
XIV	<i>SaSc</i>	87-91, Crimson Glo
XV	<i>SgSh</i>	30-AN-7, Rubi Sweet
XVI	<i>SfSk</i>	Kelsey*, Wickson
XVII	<i>SbSo</i>	Ambra, Olinda
XVIII	<i>SaSf</i>	Ozarkpremier
XIX	<i>SbSd</i>	Formosa
XX	<i>SbSk</i>	3442
XXI	<i>SeSk</i>	Simka, Simon
0		Songria 15, Oishiwasesumomo , Red Heart,, October Red, Joana Red, Mitard, Abundance, Byron Gold, 3458

G.I.	Genotipo S	Variedades analizados
I	<i>SaSb</i>	606, Red Beaut, Sordum, Burmosa
II	<i>SbSc</i>	Blackamber, Black Beaut, Delbartazur, Fortune, Golden Plumza, Green Sun*, Laroda, October Sun, TC Sun, Zanzi Sun, Golden Globe, Golden Plum, Early Sun, SPR3318, SGPR3726, 3556, 3726
III	<i>SbSf</i>	Frontier, Golden Globe*, AU Amber, AU Road Side
IV	<i>SbSh</i>	Eldorado, Freedom, Friar*, Hiromi Red, Larry Ann, Nubiana, Owen T, Queen Ann, Songria 10, E137, E316, PR34
VII	<i>ScSh</i>	Angelenex, Angeleno, Queen Rosa, Ruby Crunch, Gaia, Sweet August, 30-an-7, Royal Diamond, Ruby Queen, 3485
VIII	<i>SeSh</i>	Black Diamond, Black Gold, Black Late, Diamex, Earliqueen, Extremagold, John W., Laetitia, Showtime, Souvenir, 26-bd-10, PR9, 3571, 3530, 3575
IX	<i>SfSg</i>	Golden Japan
X	<i>ShSk</i>	31-SG-6, Golden Plum, Howard Sun, Songold, 3611, 3989
XI	<i>ScSe</i>	Autum Giant, Black Splendor, Casselman, Royal Zee, Royal Garner, Santa Rosa, Champion, Rubirosa, Sybarite, AU Rosa, E326, 3527
XII	<i>SbSe</i>	Pioneer, Sapphire, Black Jewell, Freya, SGPR551, Sparkly
XIII	<i>SeSf</i>	Black Star, Primetime, Morris
XIV	<i>SaSc</i>	87-91, Crimson Glo
XV	<i>SgSh</i>	30-AN-7, Rubi Sweet
XVI	<i>SfSk</i>	Kelsey*, Wickson
XVII	<i>SbSo</i>	Ambra, Olinda
XVIII	<i>SaSf</i>	Ozarkpremier
XIX	<i>SbSd</i>	Formosa
XX	<i>SbSk</i>	3442
XXI	<i>SeSk</i>	Simka, Simon
0		Songria 15, Oishiwasesumomo , Red Heart,, October Red, Joana Red, Mitard, Abundance, Byron Gold, 3458

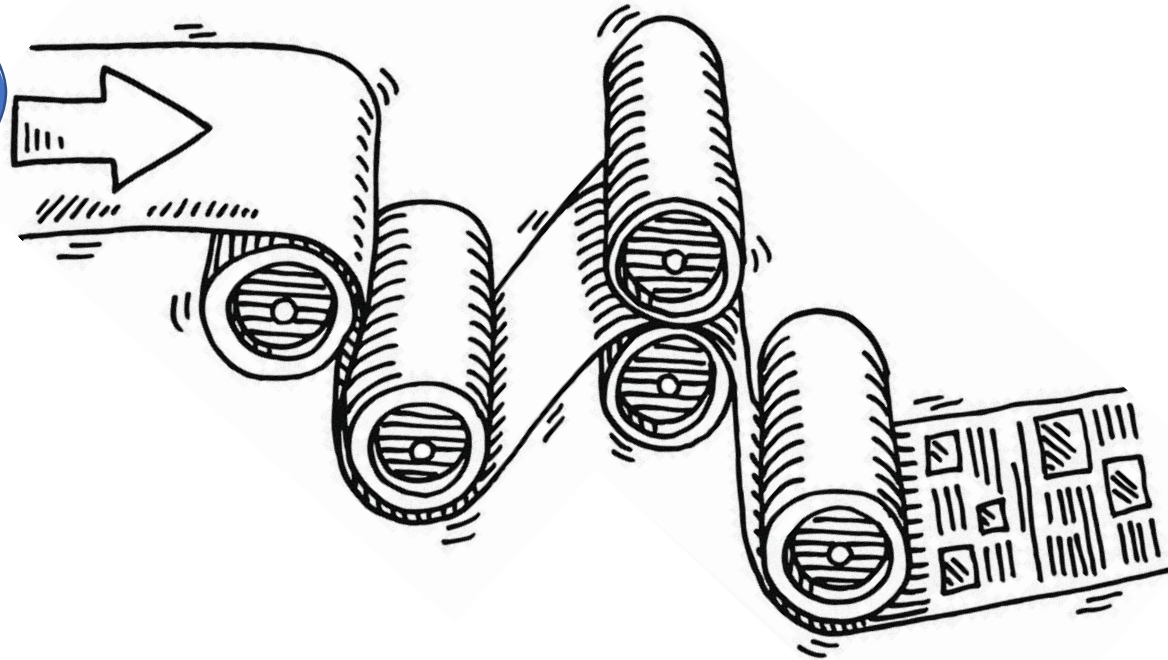
G.I.	Genotipo S	Variedades analizados
I	<i>SaSb</i>	606, Red Beaut, Sordum, Burmosa
II	<i>SbSc</i>	Blackamber, Black Beaut, Delbartazur, Fortune, Golden Plumza, Green Sun*, Laroda, October Sun, TC Sun, Zanzi Sun, Golden Globe, Golden Plum, Early Sun, SPR3318, SGPR3726, 3556, 3726
III	<i>SbSf</i>	Frontier, Golden Globe*, AU Amber, AU Road Side
IV	<i>SbSh</i>	Eldorado, Freedom, Friar*, Hiromi Red, Larry Ann, Nubiana, Owen T, Queen Ann, Songria 10, E137, E316, PR34
VII	<i>ScSh</i>	Angelenex, Angeleno, Queen Rosa, Ruby Crunch, Gaia, Sweet August, 30-an-7, Royal Diamond, Ruby Queen, 3485
VIII	<i>SeSh</i>	Black Diamond, Black Gold, Black Late, Diamex, Earliqueen, Extremagold, John W., Laetitia, Showtime, Souvenir, 26-bd-10, PR9, 3571, 3530, 3575
IX	<i>SfSg</i>	Golden Japan
X	<i>ShSk</i>	31-SG-6, Golden Plum, Howard Sun, Songold, 3611, 3989
XI	<i>ScSe</i>	Autum Giant, Black Splendor, Casselman, Royal Zee, Royal Garner, Santa Rosa, Champion, Rubirosa, Sybarite, AU Rosa, E326, 3527
XII	<i>SbSe</i>	Pioneer, Sapphire, Black Jewell, Freya, SGPR551, Sparkly
XIII	<i>SeSf</i>	Black Star, Primetime, Morris
XIV	<i>SaSc</i>	87-91, Crimson Glo
XV	<i>SgSh</i>	30-AN-7, Rubi Sweet
XVI	<i>SfSk</i>	Kelsey*, Wickson
XVII	<i>SbSo</i>	Ambra, Olinda
XVIII	<i>SaSf</i>	Ozarkpremier
XIX	<i>SbSd</i>	Formosa
XX	<i>SbSk</i>	3442
XXI	<i>SeSk</i>	Simka, Simon
0		Songria 15, Oishiwasesumomo , Red Heart,, October Red, Joana Red, Mitard, Abundance, Byron Gold, 3458

G.I.	Genotipo S	Variedades analizados
I	<i>SaSb</i>	606, Red Beaut, Sordum, Burmosa
II	<i>SbSc</i>	Blackamber, Black Beaut, Delbartazur, Fortune, Golden Plumza, Green Sun*, Laroda, October Sun, TC Sun, Zanzi Sun, Golden Globe, Golden Plum, Early Sun, SPR3318, SGPR3726, 3556, 3726
III	<i>SbSf</i>	Frontier, Golden Globe*, AU Amber, AU Road Side
IV	<i>SbSh</i>	Eldorado, Freedom, Friar*, Hiromi Red, Larry Ann, Nubiana, Owen T, Queen Ann, Songria 10, E137, E316, PR34
VII	<i>ScSh</i>	Angelenex, Angeleno, Queen Rosa, Ruby Crunch, Gaia, Sweet August, 30-an-7, Royal Diamond, Ruby Queen, 3485
VIII	<i>SeSh</i>	Black Diamond, Black Gold, Black Late, Diamex, Earliqueen, Extremagold, John W., Laetitia, Showtime, Souvenir, 26-bd-10, PR9, 3571, 3530, 3575
IX	<i>SfSg</i>	Golden Japan
X	<i>ShSk</i>	31-SG-6, Golden Plum, Howard Sun, Songgold, 3611, 3989
XI	<i>ScSe</i>	Autum Giant, Black Splendor, Casselman, Royal Zee, Royal Garner, Santa Rosa, Champion, Rubirosa, Sybarite, AU Rosa, E326, 3527
XII	<i>SbSe</i>	Pioneer, Sapphire, Black Jewell, Freya, SGPR551, Sparkly
XIII	<i>SeSf</i>	Black Star, Primetime, Morris
XIV	<i>SaSc</i>	87-91, Crimson Glo
XV	<i>SgSh</i>	30-AN-7, Rubi Sweet
XVI	<i>SfSk</i>	Kelsey*, Wickson
XVII	<i>SbSo</i>	Ambra, Olinda
XVIII	<i>SaSf</i>	Ozarkpremier
XIX	<i>SbSd</i>	Formosa
XX	<i>SbSk</i>	3442
XXI	<i>SeSk</i>	Simka, Simon
0		Songria 15, Oishiwasesumomo , Red Heart,, October Red, Joana Red, Mitard, Abundance, Byron Gold, 3458

G.I.	Genotipo S	Variedades analizados
I	<i>SaSb</i>	606, Red Beaut, Sordum, Burmosa
II	<i>SbSc</i>	Blackamber, Black Beaut, Delbartazur, Fortune, Golden Plumza, Green Sun*, Laroda, October Sun, TC Sun, Zanzi Sun, Golden Globe, Golden Plum, Early Sun, SPR3318, SGPR3726, 3556, 3726
III	<i>SbSf</i>	Frontier, Golden Globe*, AU Amber, AU Road Side
IV	<i>SbSh</i>	Eldorado, Freedom, Friar*, Hiromi Red, Larry Ann, Nubiana, Owen T, Queen Ann, Songria 10, E137, E316, PR34
VII	<i>ScSh</i>	Angelenex, Angeleno, Queen Rosa, Ruby Crunch, Gaia, Sweet August, 30-an-7, Royal Diamond, Ruby Queen, 3485
VIII	<i>SeSh</i>	Black Diamond, Black Gold, Black Late, Diamex, Earliqueen, Extremagold, John W., Laetitia, Showtime, Souvenir, 26-bd-10, PR9, 3571, 3530, 3575
IX	<i>SfSg</i>	Golden Japan
X	<i>ShSk</i>	31-SG-6, Golden Plum, Howard Sun, Songold, 3611, 3989
XI	<i>ScSe</i>	Autum Giant, Black Splendor, Casselman, Royal Zee, Royal Garner, Santa Rosa, Champion, Rubirosa, Sybarite, AU Rosa, E326, 3527
XII	<i>SbSe</i>	Pioneer, Sapphire, Black Jewell, Freya, SGPR551, Sparkly
XIII	<i>SeSf</i>	Black Star, Primetime, Morris
XIV	<i>SaSc</i>	87-91, Crimson Glo
XV	<i>SgSh</i>	30-AN-7, Rubi Sweet
XVI	<i>SfSk</i>	Kelsey*, Wickson
XVII	<i>SbSo</i>	Ambra, Olinda
XVIII	<i>SaSf</i>	Ozarkpremier
XIX	<i>SbSd</i>	Formosa
XX	<i>SbSk</i>	3442
XXI	<i>SeSk</i>	Simka, Simon
0		Songria 15, Oishiwasesumomo , Red Heart,, October Red, Joana Red, Mitard, Abundance, Byron Gold, 3458

G.I.	Genotipo S	Variedades analizados
I	<i>SaSb</i>	606, Red Beaut, Sordum, Burmosa
II	<i>SbSc</i>	Blackamber, Black Beaut, Delbartazur, Fortune, Golden Plumza, Green Sun*, Laroda, October Sun, TC Sun, Zanzi Sun, Golden Globe, Golden Plum, Early Sun, SPR3318, SGPR3726, 3556, 3726
III	<i>SbSf</i>	Frontier, Golden Globe*, AU Amber, AU Road Side
IV	<i>SbSh</i>	Eldorado, Freedom, Friar*, Hiromi Red, Larry Ann, Nubiana, Owen T, Queen Ann, Songria 10, E137, E316, PR34
VII	<i>ScSh</i>	Angelenex, Angeleno, Queen Rosa, Ruby Crunch, Gaia, Sweet August, 30-an-7, Royal Diamond, Ruby Queen, 3485
VIII	<i>SeSh</i>	Black Diamond, Black Gold, Black Late, Diamex, Earliqueen, Extremagold, John W., Laetitia, Showtime, Souvenir, 26-bd-10, PR9, 3571, 3530, 3575
IX	<i>SfSg</i>	Golden Japan
X	<i>ShSk</i>	31-SG-6, Golden Plum, Howard Sun, Songgold, 3611, 3989
XI	<i>ScSe</i>	Autum Giant, Black Splendor, Casselman, Royal Zee, Royal Garner, Santa Rosa, Champion, Rubirosa, Sybarite, AU Rosa, E326, 3527
XII	<i>SbSe</i>	Pioneer, Sapphire, Black Jewell, Freya, SGPR551, Sparkly
XIII	<i>SeSf</i>	Black Star, Primetime, Morris
XIV	<i>SaSc</i>	87-91, Crimson Glo
XV	<i>SgSh</i>	30-AN-7, Rubi Sweet
XVI	<i>SfSk</i>	Kelsey*, Wickson
XVII	<i>SbSo</i>	Ambra, Olinda
XVIII	<i>SaSf</i>	Ozarkpremier
XIX	<i>SbSd</i>	Formosa
XX	<i>SbSk</i>	3442
XXI	<i>SeSk</i>	Simka, Simon
0		Songria 15, Oishiwasesumomo , Red Heart,, October Red, Joana Red, Mitard, Abundance, Byron Gold, 3458

2007



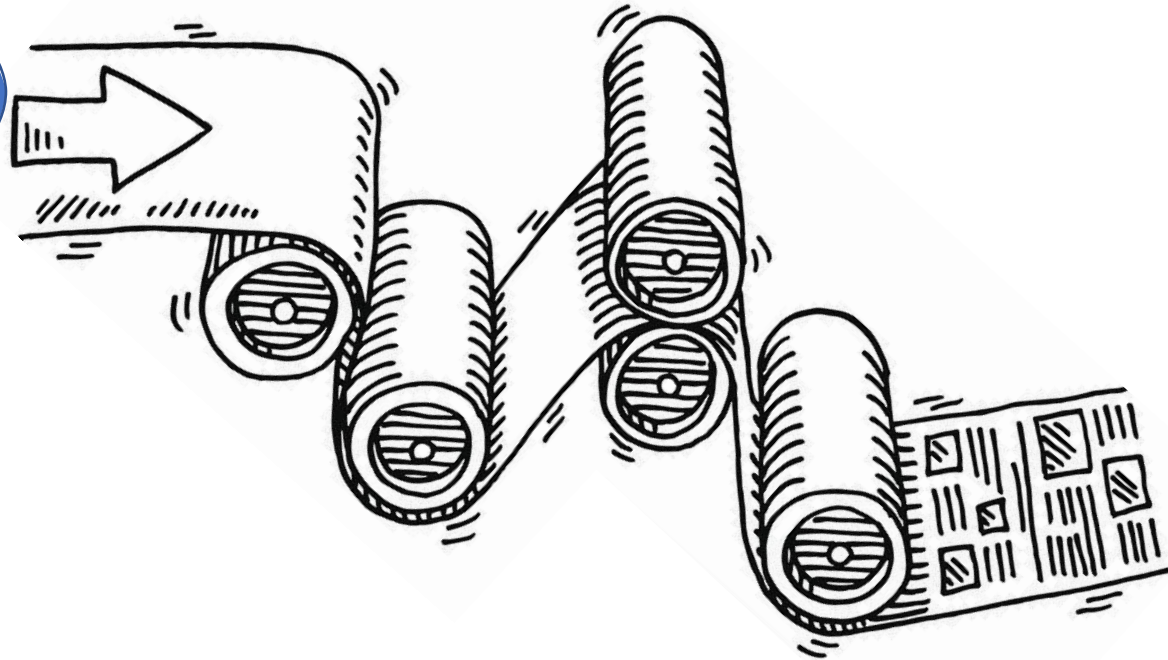
35 GRUPOS DE INCOMPATIBILIDAD

CERCA DE 400 VARIEDADES

2012

agroseguro 

2007



HOY

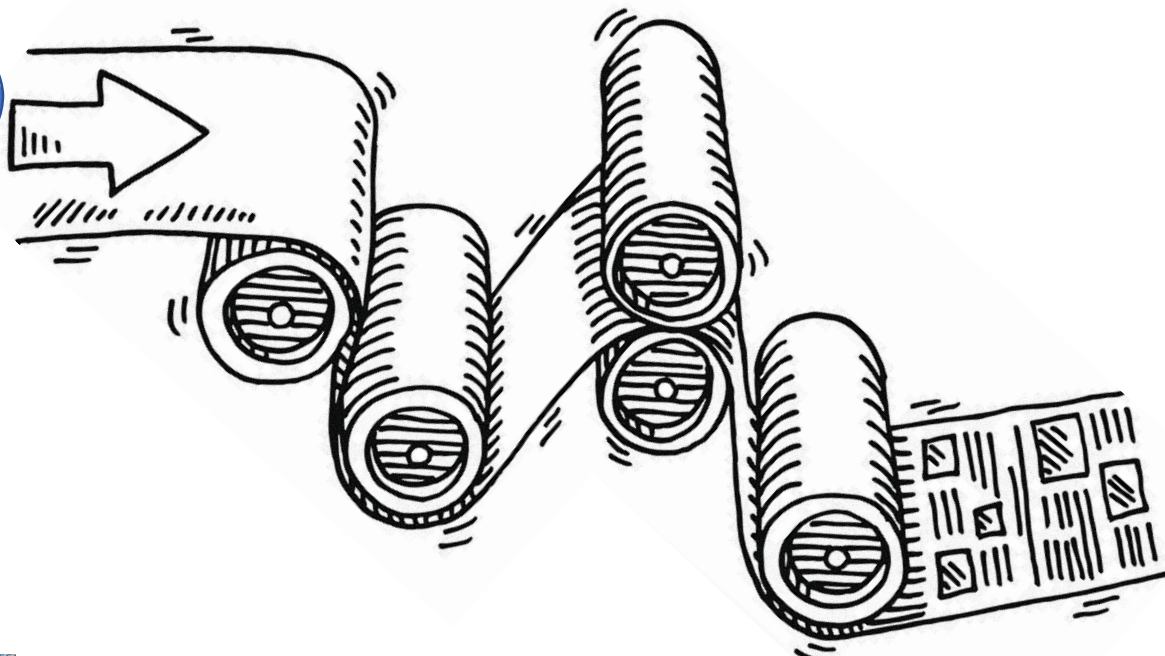
35 GRUPOS DE INCOMPATIBILIDAD

CERCA DE 400 VARIEDADES

SOLUCIONES A LA FALTA
DE CUAJADO

NUEVOS RETOS DE INVESTIGACIÓN

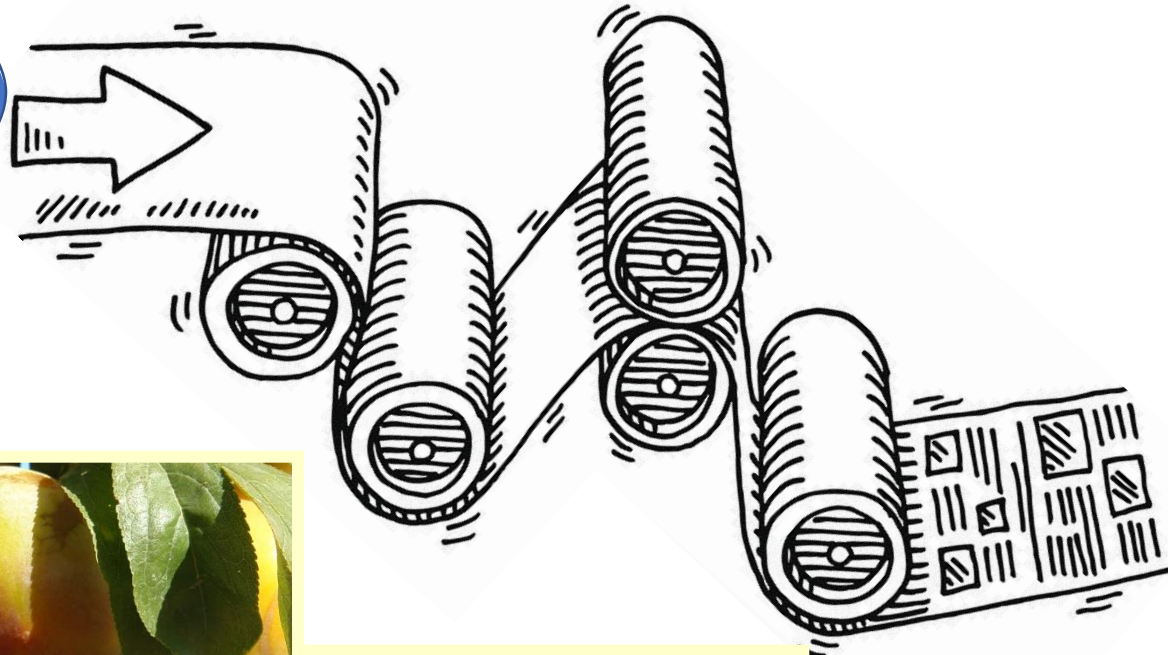
2007



HOY



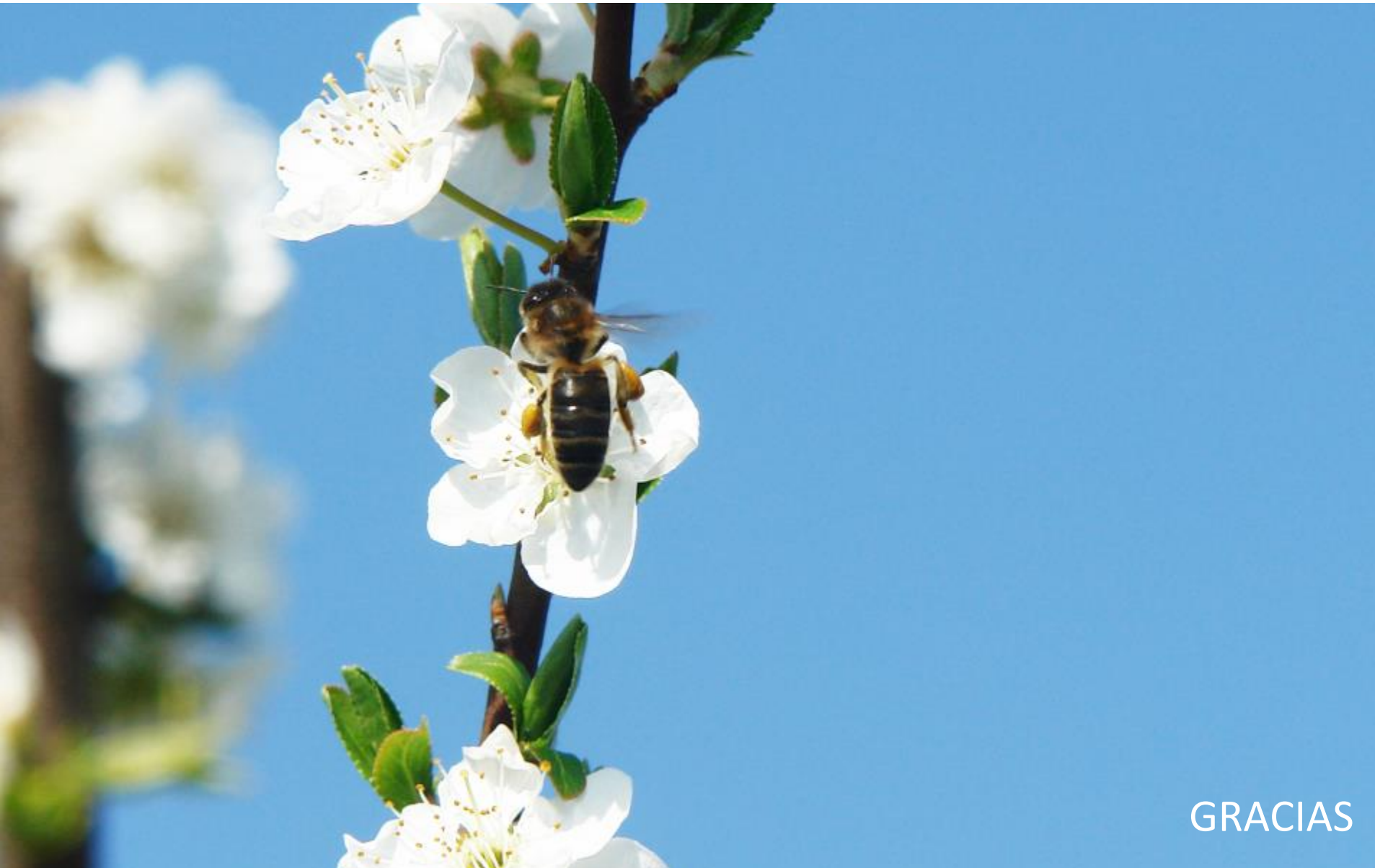
2007



HOY







GRACIAS

Patrocina:

